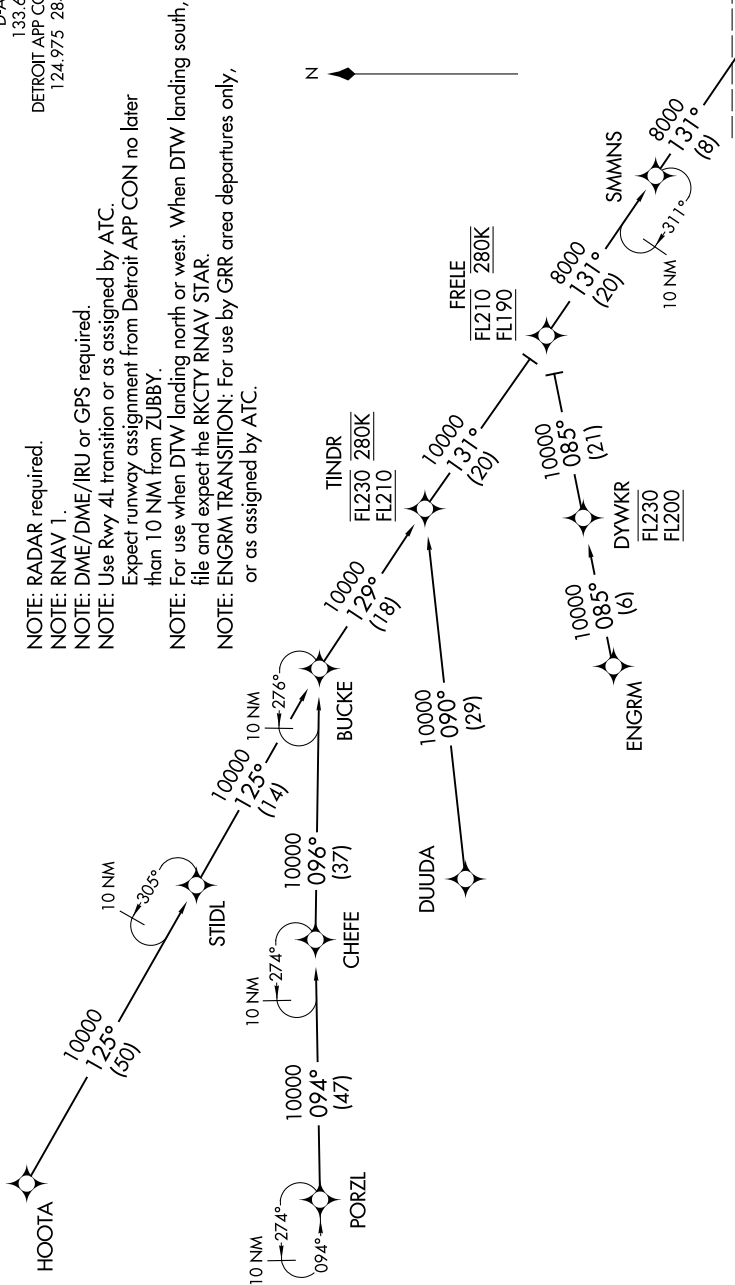


EC-1, 11 JUN 2026 to 09 JUL 2026

D-ATIS
133.675
DETROIT APP CON
124.975 284.0

- NOTE: RADAR required.
- NOTE: RNAV 1.
- NOTE: DME/DME/IRU or GPS required.
- NOTE: Use Rwy 4L transition or as assigned by ATC.
- NOTE: Expect runway assignment from Detroit APP CON no later than 10 NM from ZUBBY.
- NOTE: For use when DTW landing north or west. When DTW landing south, file and expect the RKCTY RNAV STAR.
- NOTE: ENGRM TRANSITION: For use by GRR area departures only, or as assigned by ATC.



DUUDA TRANSITION (DUUDA.KKISS2)
 ENGRM TRANSITION (ENGRM.KKISS2)
 HOOTA TRANSITION (HOOTA.KKISS2)
 PORZL TRANSITION (PORZL.KKISS2)

(NARRATIVE ON FOLLOWING PAGE)
 (CONTINUED ON FOLLOWING PAGE)

See following page for arrival route

NOTE: Chart not to scale.

EC-1, 11 JUN 2026 to 09 JUL 2026