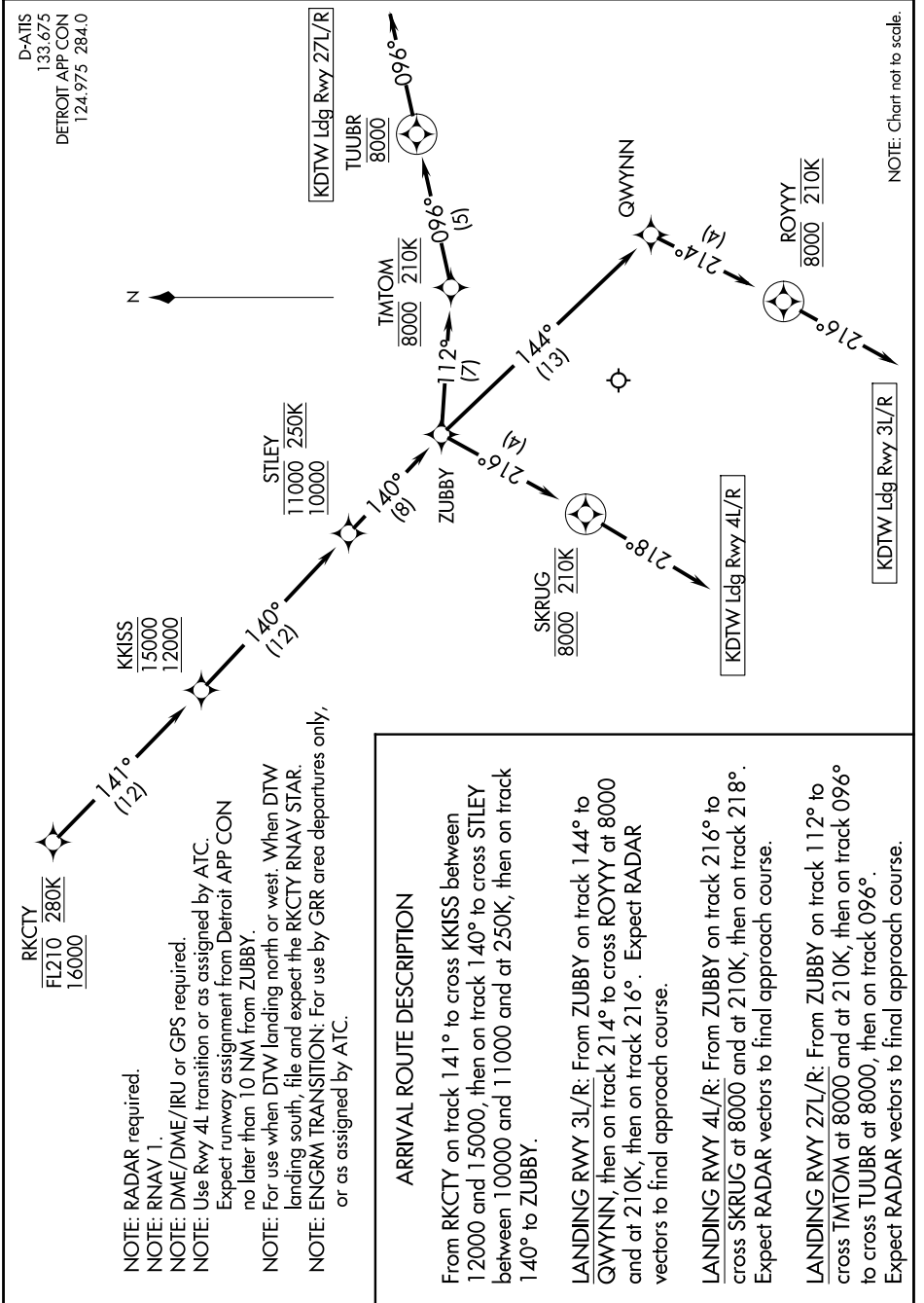


KKISS TWO ARRIVAL (RNAV) Arrival Route

EC-1, 11 JUN 2026 to 09 JUL 2026



RKCTY  
FL210 280K  
16000

NOTE: RADAR required.  
NOTE: RNAV 1.  
NOTE: DME/DME/IRU or GPS required.  
NOTE: Use Rwy 4L transition or as assigned by ATC.  
Expect runway assignment from Detroit APP CON no later than 10 NM from ZUBBY.

NOTE: For use when DTW landing north or west. When DTW landing south, file and expect the RKCTY RNAV STAR.  
NOTE: ENGRM TRANSITION: For use by GRR area departures only, or as assigned by ATC.

KKISS  
15000  
12000

STILEY  
11000 250K  
10000

ZUBBY  
8000 210K

TMTOM  
8000 210K

TUUBR  
8000

GWYNN  
8000 210K

ROYYY  
8000 210K

SKRUG  
8000 210K

KDTW Ldg Rwy 3L/R

KDTW Ldg Rwy 4L/R

KDTW Ldg Rwy 27L/R



NOTE: Chart not to scale.

EC-1, 11 JUN 2026 to 09 JUL 2026