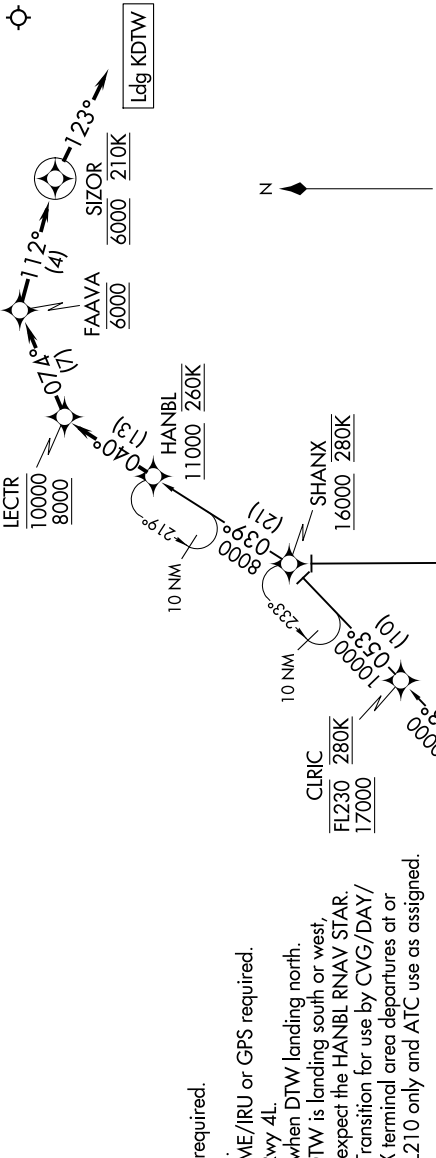


EC-1, 11 JUN 2026 to 09 JUL 2026

D-ATIS
133.675
DETROIT APP CON
124.975 284.0

- NOTE: RADAR required.
- NOTE: RNAV 1.
- NOTE: DME/DME/IRU or GPS required.
- NOTE: Expect Rwy 4L.
- NOTE: For use when DTW landing north.
When DTW is landing south or west,
file and expect the HANBL RNAV STAR.
- NOTE: TORR Transition for use by CVG/DAY/
SDF/LEX terminal area departures at or
below FL210 only and ATC use as assigned.



ARRIVAL ROUTE DESCRIPTION

- SWAYD TRANSITION (SWAYD.LECTR3)
- TORR TRANSITION (TORR.LECTR3)
- WWODD TRANSITION (WWODD.LECTR3)

From HANBL on track 040° to cross LECTR between 8000 and 10000, then on track 074° to cross FAAVA at 6000, then on track 112° to cross SIZOR at 6000 and at 210K, then on track 123°.
Expect RADAR vectors to final approach course.

LOST COMMUNICATIONS

From SIZOR, execute RNAV (GPS) Y Rwy 4L or ILS Y Rwy 4L approach.

NOTE: Chart not to scale.

EC-1, 11 JUN 2026 to 09 JUL 2026