

RNAV (GPS) RWY 22

APCH CRS 216°	Rwy Idg 13,553
	TDZE 3947
	Arprt Elev 3947

[USA]

BIGGS AAF (KBIF)

RNP APCH - GPS
 RADAR required when R-5103A, R-5103B, R-5103C, 5107K are active.
 ▼ * Circling not authorized for CAT D West of Rwy 4-22.



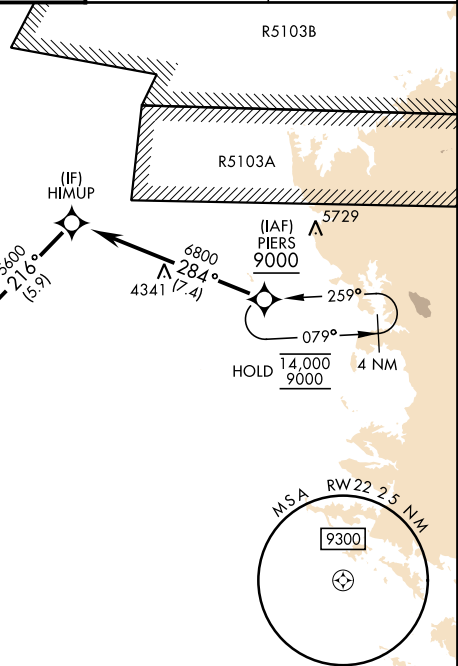
MISSED APPROACH: Climb to 4400 then climbing left turn to 9000 direct PIERS and hold, continue climb-in-hold to 9000.

ATIS 120.0 254.3	EL PASO APP 119.15 353.5 (S of V16) 124.25 298.85 (N of V16)	TOWER 127.9 342.25	GND CON 121.6 251.125	ASR
----------------------------	--	------------------------------	---------------------------------	-----

Arrivals expect RADAR vectors to final when restricted areas are active.

Procedure not authorized via V-560 eastbound without holding at PIERS. ATC clearance required.

CAUTION: EL PASO INTL airport is 2.5 NM southeast with same runway configuration.

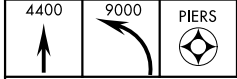


SC-3, 11 JUN 2026 to 09 JUL 2026

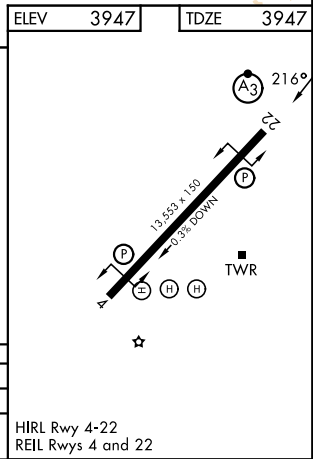
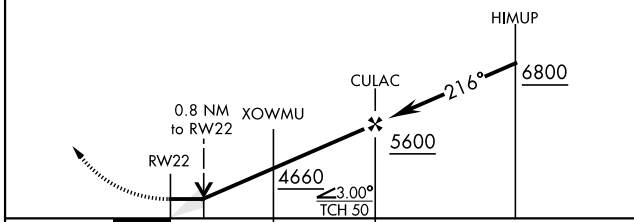
SC-3, 11 JUN 2026 to 09 JUL 2026

UNITED STATES
MEXICO

ELEV	3947	TDZE	3947
------	------	------	------



VGSI and descent angles not coincident (VGSI Angle 3.00/TCH 75).



CATEGORY	A	B	C	D
RNAV MDA	4280-1		333 (400-1)	
CIRCLING*	4400-1	453 (500-1)	4560-1 3/4 613 (700-1 3/4)	4560-2 613 (700-2)

HIRL Rwy 4-22
REIL Rws 4 and 22

RNAV (GPS) RWY 22