

LATVE THREE DEPARTURE (RNAV)

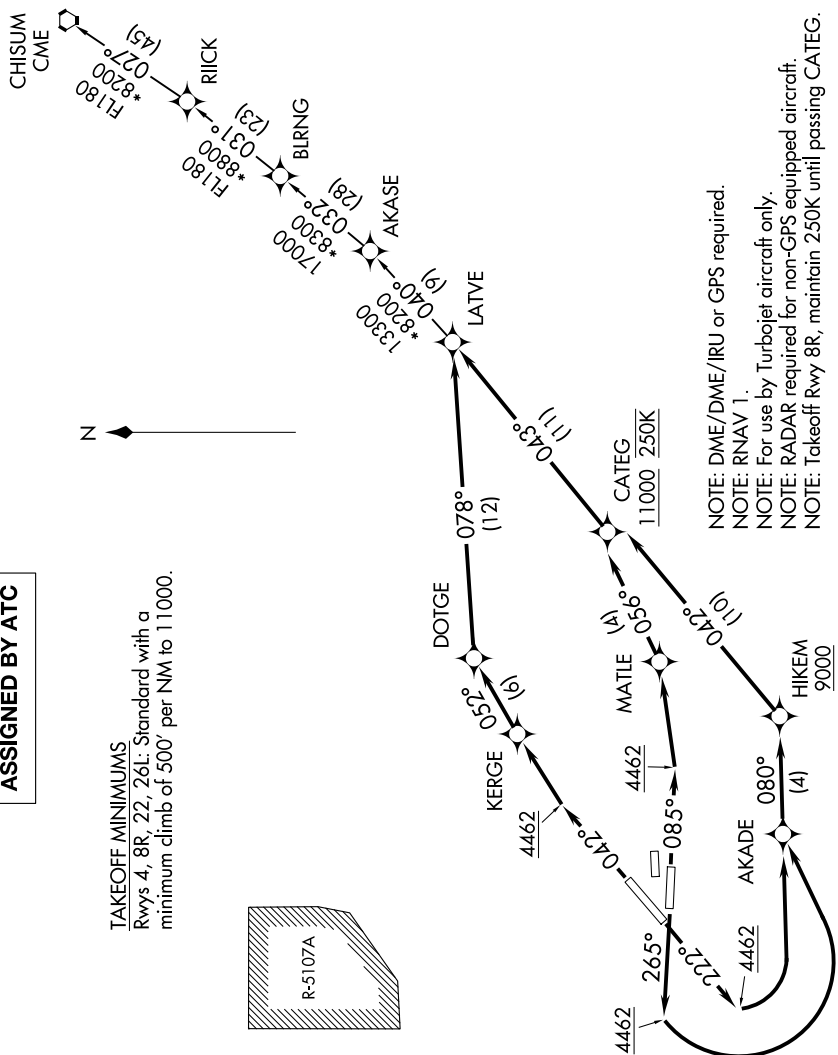
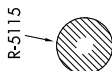
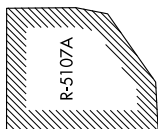
SC-3, 11 JUN 2026 to 09 JUL 2026

TOP ALTITUDE: ASSIGNED BY ATC

TAKEOFF MINIMUMS

Rwys 4, 8R, 22, 26L: Standard with a minimum climb of 500' per NM to 11000.

- D-ATIS 120.0 254.3
- CINC DEL 125.0 379.1
- GND CON 121.9 348.6
- EL PASO TOWER 118.3 239.275
- EL PASO DEP CON 119.15 263.0
- ALBUJERQUE CENTER 135.875 292.15



- NOTE: DME/DME/IRU or GPS required.
- NOTE: RNAV 1.
- NOTE: For use by Turbojet aircraft only.
- NOTE: RADAR required for non-GPS equipped aircraft.
- NOTE: Takeoff Rwy 8R, maintain 250K until passing CATEG.

(NARRATIVE ON FOLLOWING PAGE)

NOTE: Chart not to scale.

SC-3, 11 JUN 2026 to 09 JUL 2026