
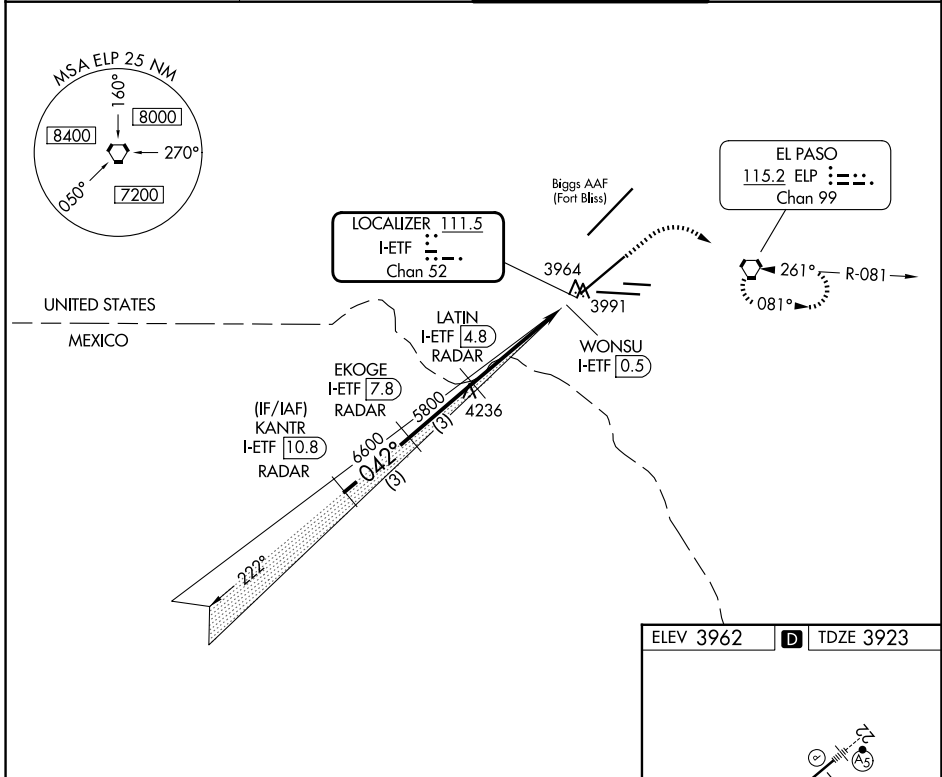





LOC/DME I-ETF 111.5 Chan 52	APP CRS 042°	Rwy Ldg 12020 TDZE 3923 Apt Elev 3962
---	------------------------	--

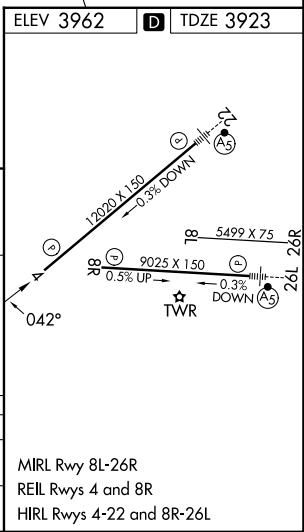
LOC/DME RWY 4

EL PASO INTL (ELP)

RADAR required for procedure entry.		MISSED APPROACH: Climb to 4500 then climbing right turn to 6900 direct ELP VORTAC and hold, continue climb-in-hold to 6900.	
 Circling NA for Cat D north of Rwy 26R and northwest of Rwy 4.			
D-ATIS 120.0 254.3	EL PASO APP CON 124.25 298.85	EL PASO TOWER 118.3 239.275	GND CON 121.9 348.6



KANTR I-ETF 10.8 RADAR	EKOGE I-ETF 7.8 RADAR	LATIN I-ETF 4.8 RADAR	4500	6900	ELP
					
7500 — 042° — 6600		5800		WONSU I-ETF 0.5	
VGS1 and descent angles not coincident (VGS1 Angle 3.00/TCH 55). Disregard GS indications.		3.42° TCH 55			
3 NM		3 NM		4.3 NM	
CATEGORY	A	B	C	D	
S-4	4300/50		377 (400-1)	4300/60 377 (400-1¼)	
CIRCLING	4420-1 458 (500-1)	4460-1 498 (500-1)	4480-1½ 518 (600-1½)	4680-2¼ 718 (800-2¼)	



SC-3, 11 JUN 2026 to 09 JUL 2026

SC-3, 11 JUN 2026 to 09 JUL 2026