

RNAV (RNP) Y RWY 8R

EL PASO INTL (ELP)

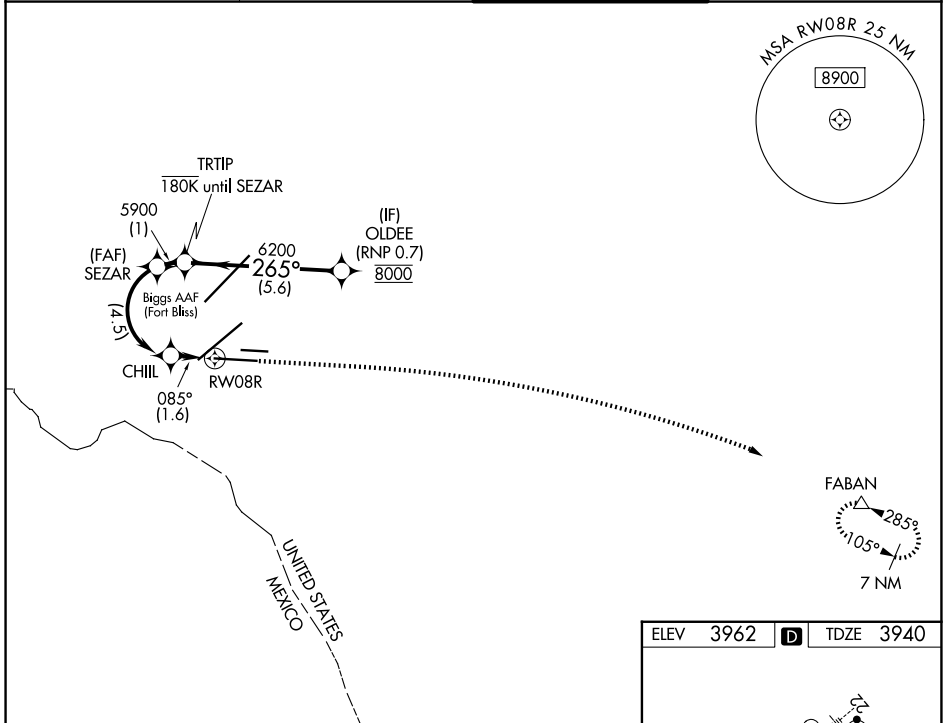
APP CRS	Rwy Ldg	9025
085°	TDZE	3940
	Apt Elev	3962

RNP AR APCH. RF required.

ASR For uncompensated Baro-VNAV systems, procedure NA below -5°C or above 54°C.

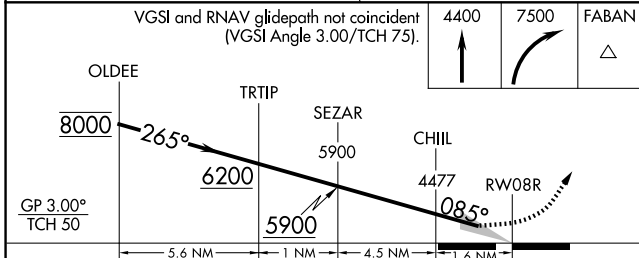
MISSED APPROACH: Climb to 4400 then climbing right turn to 7500 direct FABAN and hold.

D-ATIS 120.0 254.3	EL PASO APP CON 124.25 298.85	EL PASO TOWER 118.3 239.275	GND CON 121.9 348.6
------------------------------	---	---------------------------------------	-------------------------------

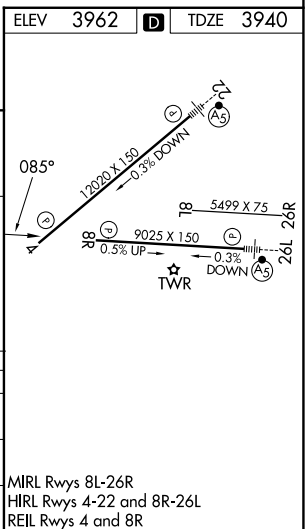


SC-3, 11 JUN 2026 to 09 JUL 2026

SC-3, 11 JUN 2026 to 09 JUL 2026



	OLDEE	TRTIP	SEZAR	CHIL	RWY 08R	FABAN
	8000	6200	5900	4477		
	GP 3.00°					
	TCH 50					
CATEGORY	A	B	C	D		
RNP 0.20 DA		4193- ³ / ₄	253 (300- ³ / ₄)			
RNP 0.30 DA		4234- ⁷ / ₈	294 (300- ⁷ / ₈)			



AUTHORIZATION REQUIRED

MIRL Rwy 8L-26R
HIRL Rwy 4-22 and 8R-26L
REIL Rwy 4 and 8R