

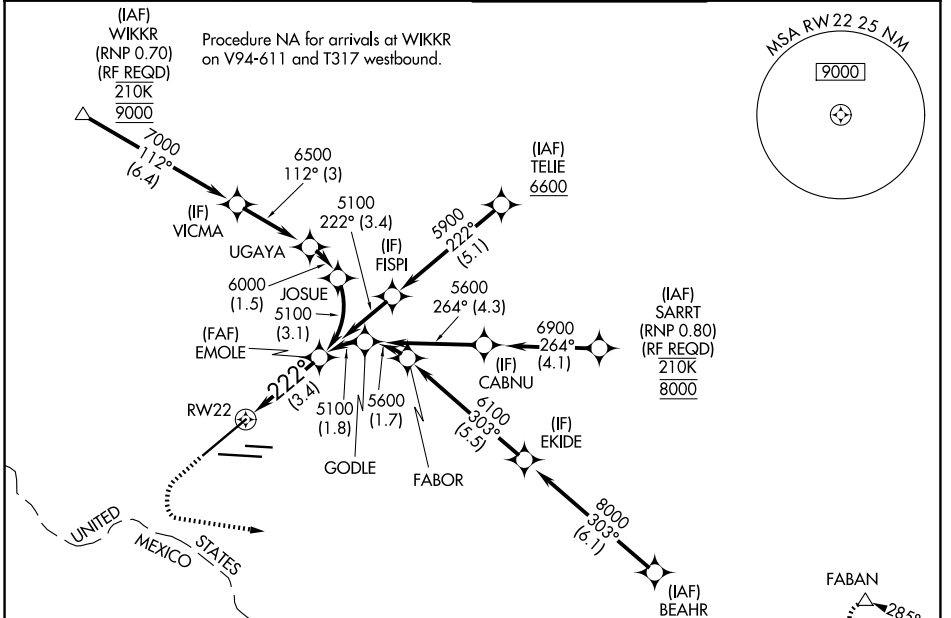
APP CRS	Rwy Ldg	12020
222°	TDZE	3950
	Apt Elev	3962

RNAV (RNP) Z RWY 22

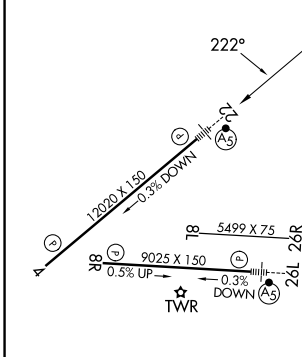
EL PASO INTL (ELP)

RNP AR APCH.	MALSR	MISSED APPROACH: Climb to 4400 then climbing left turn to 7500 direct FABAN and hold.
ASR		

D-ATIS 120.0 254.3	EL PASO APP CON 124.25 298.85	EL PASO TOWER 118.3 239.275	GND CON 121.9 348.6
------------------------------	---	---------------------------------------	-------------------------------



ELEV	3962	D	TDZE	3950
------	------	----------	------	------



↑	4400	7500	FABAN	△
VGS1 and RNAV glidepath not coincident (VGS1 Angle 3.00/TCH 70).				
RW22				
See planview for multiple IF locations.				
3.4 NM				
CATEGORY	A	B	C	D
RNP 0.10 DA		4200/24	250 (300-1/2)	
RNP 0.30 DA		4270/27	320 (400-5/8)	

MIRL Rwy 8L-26R
REIL Rws 4 and 8R
HIRL Rws 4-22 and 8R-26L

AUTHORIZATION REQUIRED

SC-3, 11 JUN 2026 to 09 JUL 2026

SC-3, 11 JUN 2026 to 09 JUL 2026