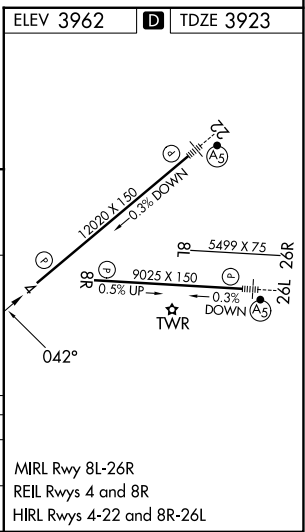
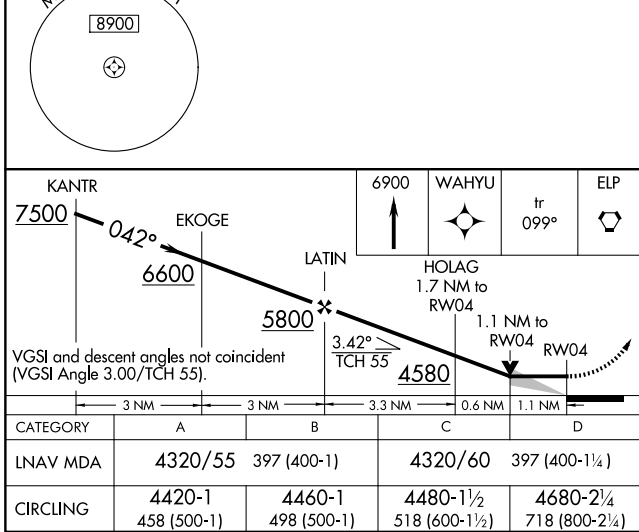
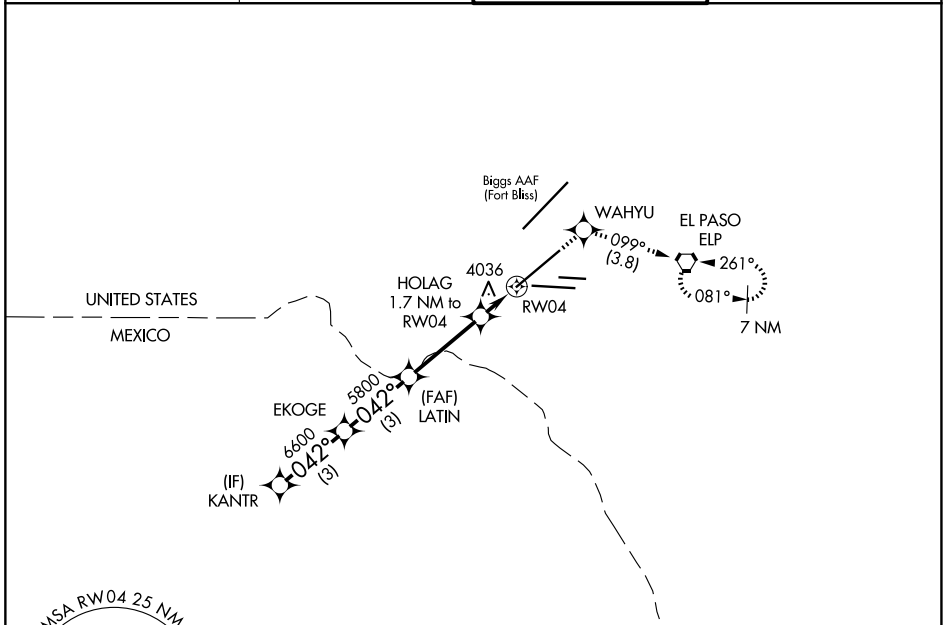


RNAV (GPS) X RWY 4

EL PASO INTL (ELP)

APP CRS 042°	Rwy Ldg TDZE Apt Elev	12020 3923 3962
------------------------	-----------------------------	--

RNP APCH-GPS.		MISSED APPROACH: Climb to 6900 direct WAHYU and on track 099° to ELP VORTAC and hold, continue climb-in-hold to 6900.	
Circling NA for Cat D north of Rwy 26R and northwest of Rwy 4.			
D-ATIS 120.0 254.3	EL PASO APP CON 124.25 298.85	EL PASO TOWER 118.3 239.275	GND CON 121.9 348.6



EL PASO, TEXAS				EL PASO INTL (ELP)
Orig-E 29DEC22	31°48'N-106°23'W			RNAV (GPS) X RWY 4

SC-3, 11 JUN 2026 to 09 JUL 2026

SC-3, 11 JUN 2026 to 09 JUL 2026