

WAAS CH 78244 W22A	APP CRS 222°	Rwy Ldg TDZE Apt Elev	12020 3950 3962
--	------------------------	-----------------------------	--

RNAV (GPS) Y RWY 22

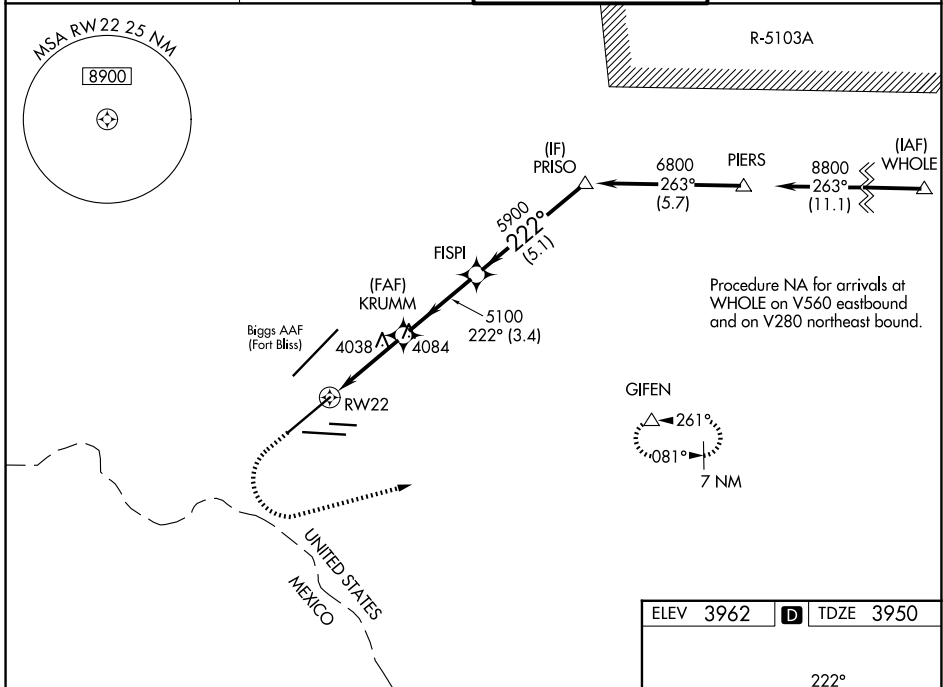
EL PASO INTL (ELP)

RNP APCH - GPS.

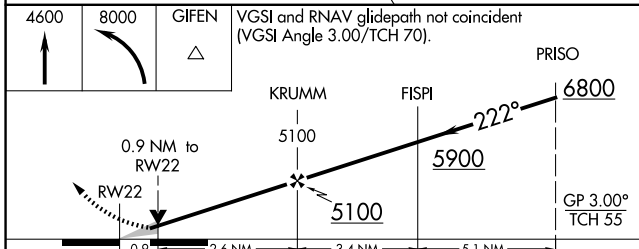
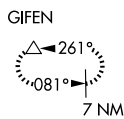
ASR Circling NA for Cat D north of Rwy 26R and northwest of Rwy 4. For uncompensated Baro-VNAV systems, LNAV/VNAV NA below -5°C or above 54°C. For inop ALS increase LNAV/VNAV Cats A/B/C visibility to RVR 4000, Cat D visibility to RVR 4500 and LNAV Cat C/D visibility to RVR 5500.

MALSR MISSED APPROACH: Climb to 4600 then climbing left turn to 8000 direct GIFEN and hold, continue climb-in-hold to 8000.

D-ATIS 120.0 254.3	EL PASO APP CON 124.25 298.85	EL PASO TOWER 118.3 239.275	GND CON 121.9 348.6
------------------------------	---	---------------------------------------	-------------------------------



Procedure NA for arrivals at WHOLE on V560 eastbound and on V280 northeast bound.



ELEV 3962	D	TDZE 3950
-----------	----------	-----------

MIRL Rwy 8L-26R
REIL Rwys 4 and 8R
HIRL Rwys 4-22 and 8R-26L

CATEGORY	A	B	C	D
LPV DA	4150/24 200 (200-1/2)			
LNAV/VNAV DA	4200/24 250 (300-1/2)			4221/24 271 (300-1/2)
LNAV MDA	4300/24	350 (400-1/2)	4300/30	350 (400-3/4)
CIRCLING	4420-1 458 (500-1)	4440-1 478 (500-1)	4480-1 1/2 518 (600-1 1/2)	4680-2 1/4 718 (800-2 1/4)

SC-3, 11 JUN 2026 to 09 JUL 2026

SC-3, 11 JUN 2026 to 09 JUL 2026