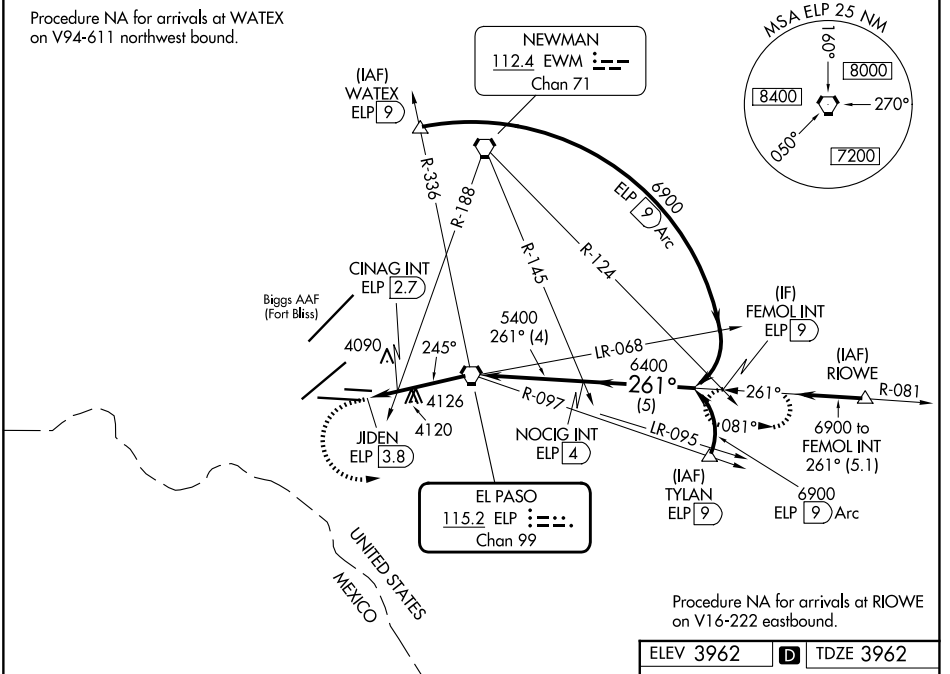


VORTAC ELP 115.2 Chan 99	APP CRS 245°	Rwy Ldg TDZE Apt Elev 9025 3962 3962
--	------------------------	--

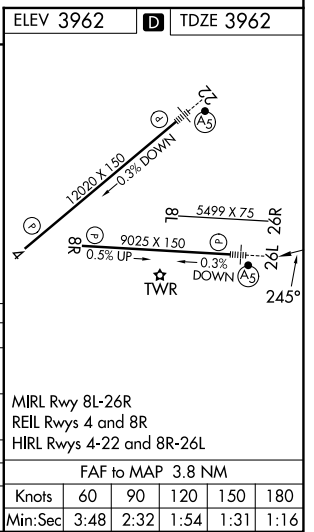
VOR RWY 26L

EL PASO INTL (ELP)

Inop table does not apply to S-26L and CINAG fix minimums S-26L. Circling NA for Cat D northwest of Rwy 4-22. ASR	MALS R AS	MISSED APPROACH: Climb to 4500 then climbing left turn to 7100 on heading 050° and on ELP VORTAC R-081 to FEMOL INT/9 DME and hold.	
		D-ATIS 120.0 254.3	EL PASO APP CON 124.25 298.85



4500	7100	ELP R-081	FEMOL INT		
hdg 050°					
		JIDEN ELP 3.8	CINAG INT ELP 2.7		
		4480	5400		
		245°	261°		
		0.3-1.1 NM	2.7 NM		
		4 NM	5 NM		
CATEGORY	A	B	C	D	E
S-26L	4480-1	518 (600-1)	4480-1 $\frac{3}{8}$	518 (600-1 $\frac{3}{8}$)	NA
CIRCLING	4480-1	518 (600-1)	4480-1 $\frac{1}{2}$	4680-2 518 (600-1 $\frac{1}{2}$) 718 (800-2)	NA
CINAG FIX MINIMUMS (DUAL VOR RECEIVERS OR DME REQUIRED)					
S-26L	4380-1	418 (500-1)	4380-1 $\frac{1}{8}$	418 (500-1 $\frac{1}{8}$)	NA
CIRCLING	4420-1 458 (500-1)	4440-1 478 (500-1)	4480-1 $\frac{1}{2}$ 518 (600-1 $\frac{1}{2}$)	4680-2 $\frac{1}{4}$ 718 (800-2 $\frac{1}{4}$)	NA



SC-3, 11 JUN 2026 to 09 JUL 2026

SC-3, 11 JUN 2026 to 09 JUL 2026