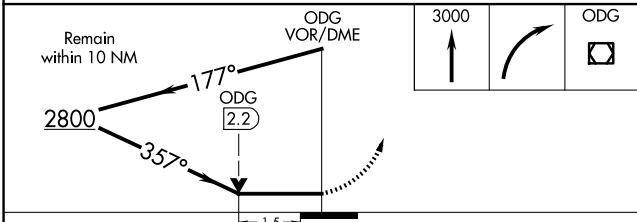
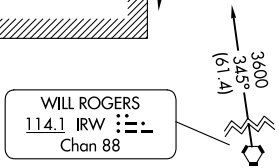
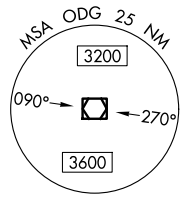
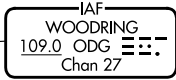
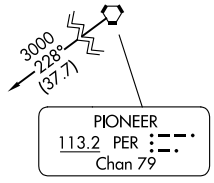
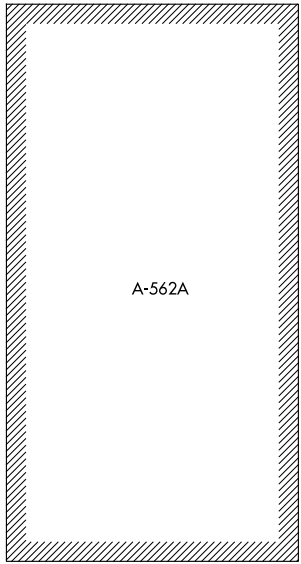


VOR/DME ODG 109.0 Chan 27	APP CRS 357°	Rwy Ldg 8002 TDZE 1147 Apt Elev 1167
--	------------------------	---

VOR RWY 35

ENID WOODRING RGNL (WDG)

<p>Circling Rwy 13 NA at night.</p>	<p>MALS</p>	MISSED APPROACH: Climb to 3000 then right turn direct ODG VOR/DME and hold.	
		<p>AWOS-3PT 123.725</p>	<p>VANCE APP CON * 121.3 346.325</p>

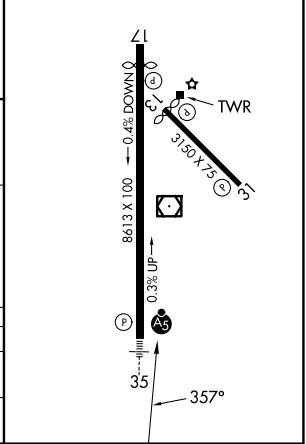


CATEGORY	A	B	C	D
S-35	1680-1/2	533 (600-1/2)	1680-1	533 (600-1)
CIRCLING	1760-1	593 (600-1)	1820-1 3/4 653 (700-1 3/4)	1880-2 1/4 713 (800-2 1/4)

ELEV 1167 TDZE 1147

MIRL Rwy 17-35

REIL Rwy 17



SC-1, 11 JUN 2026 to 09 JUL 2026

SC-1, 11 JUN 2026 to 09 JUL 2026