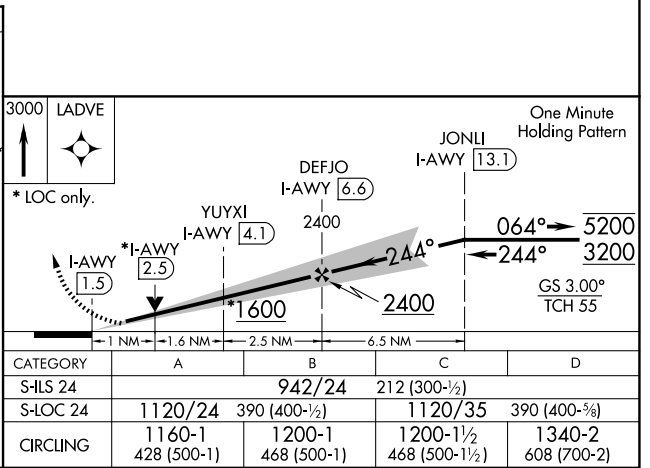
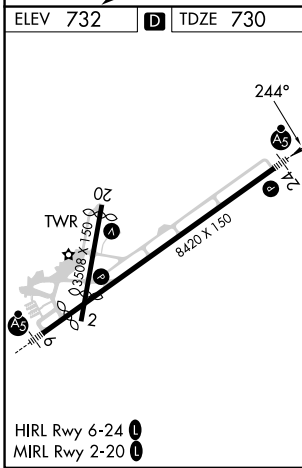
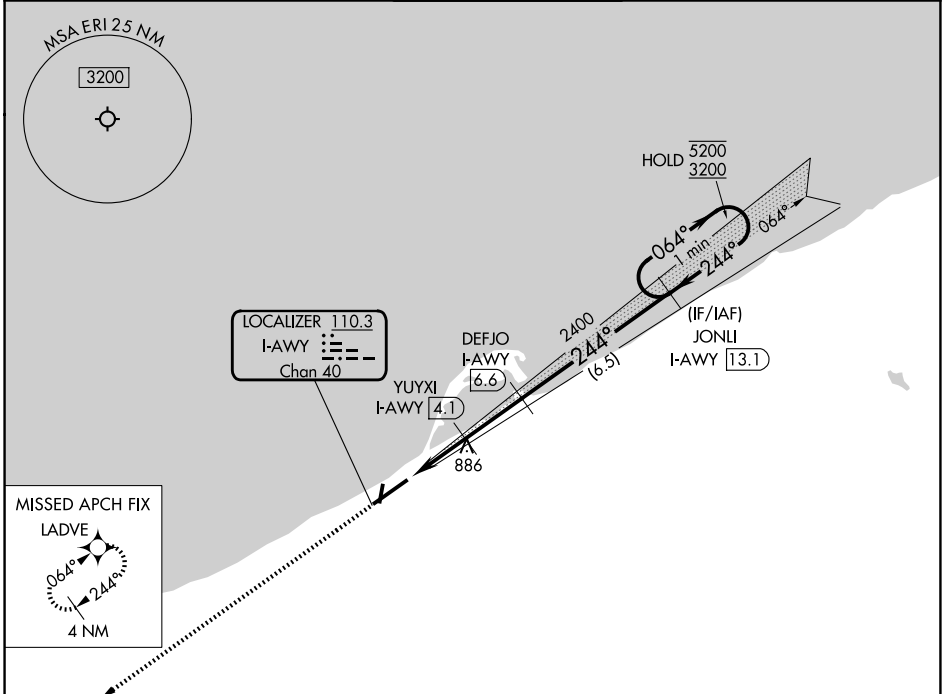


|   |                        |   |
|---|------------------------|---|
| LOC/DME I-AWY<br><b>110.3</b><br>Chan <b>40</b> | APP CRS<br><b>244°</b> | Rwy Ldg<br>TDZE <b>730</b><br>Apt Elev <b>732</b> |
|---|------------------------|---|

# ILS or LOC RWY 24

ERIE INTL/TOM RIDGE FLD (ERI)

|  |   |  |  |                         |
|--|---|--|--|-------------------------|
| RADAR required for procedure entry. RNAV 1-GPS and DME required. |   | MALSR<br>                                | MISSED APPROACH: Climb to 3000 direct LADVE and hold (GPS required). |                         |
|  | Circling Rwy 2, 20 NA at night.<br>Circling NA southeast of Rwy 6-24. |  |  |                         |
| ATIS<br><b>120.35</b>  | BUFFALO APP CON*<br><b>121.0 257.8</b>                                | ERIE TOWER*<br><b>118.1 (CTAF) 257.8</b> | GND CON<br><b>121.9</b>  | UNICOM<br><b>122.95</b> |



NE-4, 11 JUN 2026 to 09 JUL 2026

NE-4, 11 JUN 2026 to 09 JUL 2026