

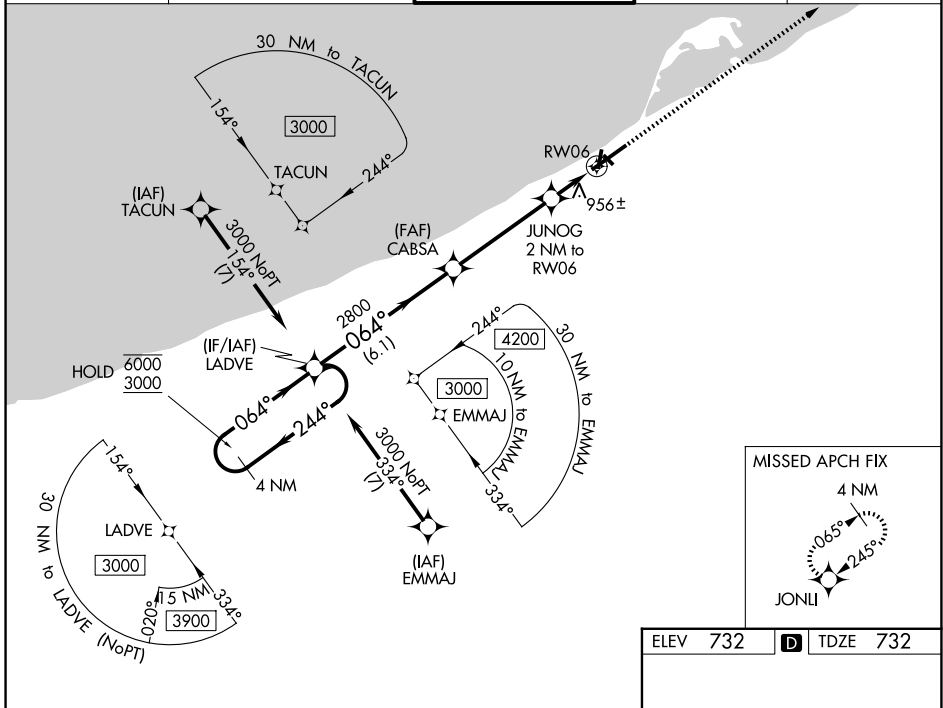
WAAS CH <b>77612</b> <b>W06A</b>	APP CRS <b>064°</b>	Rwy Ldg <b>7501</b> TDZE <b>732</b> Apt Elev <b>732</b>
--	------------------------	---

# RNAV (GPS) RWY 6

ERIE INTL/TOM RIDGE FLD (ERI)

RNP APCH - GPS.	MALSRL 	MISSED APPROACH: Climb to 3200 direct JONLI and hold.
Circling NA southeast of Rwy 6-24. Circling Rwy 2, 20 NA at night. For uncompensated Baro-VNAV systems, LNAV/VNAV NA below -15°C or above 54°C. For inop ALS, increase LNAV Cats C and D visibility to 1 1/2 SM.		

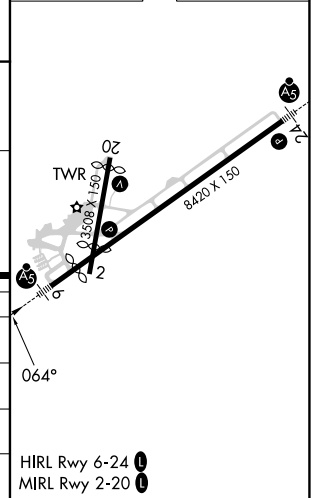
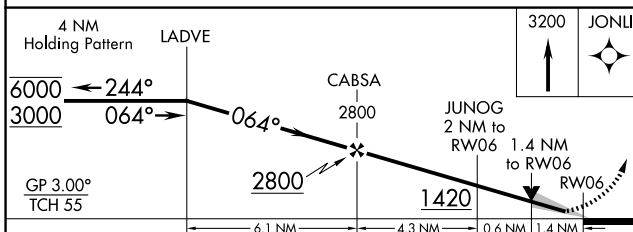
ATIS <b>120.35</b>	BUFFALO APP CON* <b>121.0 257.8</b>	ERIE TOWER* <b>118.1 (CTAF) 0 257.8</b>	GND CON <b>121.9</b>	UNICOM <b>122.95</b>
-----------------------	--	--	-------------------------	-------------------------



NE-4, 11 JUN 2026 to 09 JUL 2026

NE-4, 11 JUN 2026 to 09 JUL 2026

ELEV 732	<b>D</b> TDZE 732
----------	-------------------



CATEGORY	A	B	C	D
LPV DA		982/24	250 (300-1/2)	
LNAV/VNAV DA		1256/55	524 (600-1)	
LNAV MDA	1220/24	488 (500-1/2)	1220/50	488 (500-1)
CIRCLING	1220-1	488 (500-1)	1220-1 1/2 488 (500-1 1/2)	1340-2 608 (700-2)