

HI-TACAN Z RWY 13R

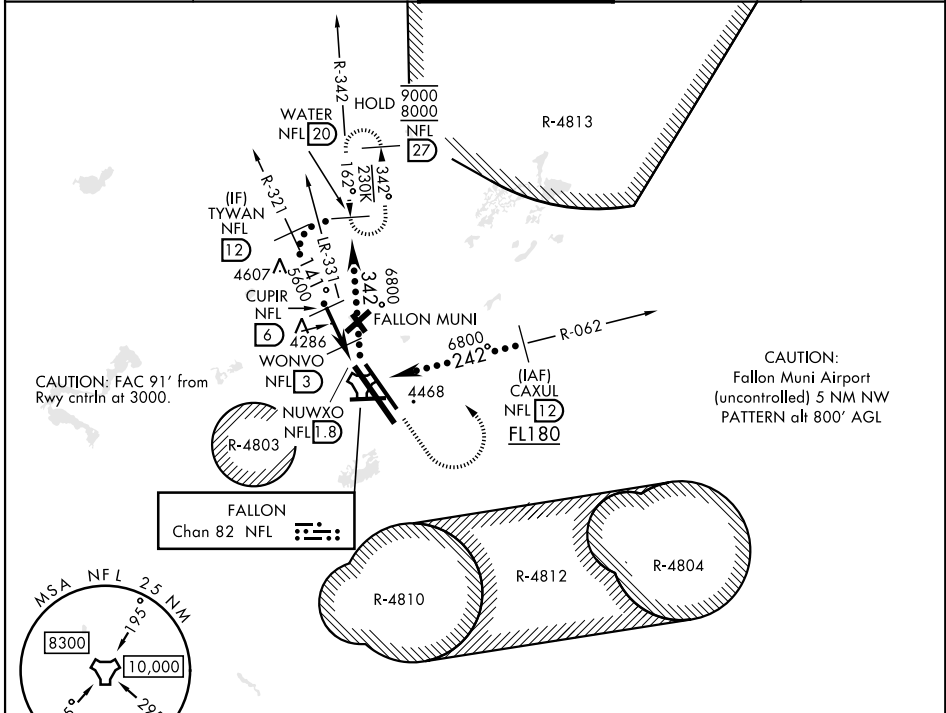
TACAN NFL Chan 82	APCH CRS 141°	Rwy Idg 14,001 TDZE 3935 Arpt Elev 3935
-----------------------------	-------------------------	--

[USN]

FALLON NAS (VAN VOORHIS FLD) (KNFL)

MISSED APPROACH: Climb to 8000 direct NFL TACAN, and left turn on heading 297° and NFL R-342 to WATER and hold, continue climb-in-hold to 8000.

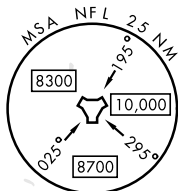
ATIS ★ 370.925	NAVY FALLON APP CON ★ 120.85 360.2	NAVY FALLON TOWER ★ 119.25 340.2	GND CON 251.15	ASR/PAR
--------------------------	--	--	--------------------------	---------



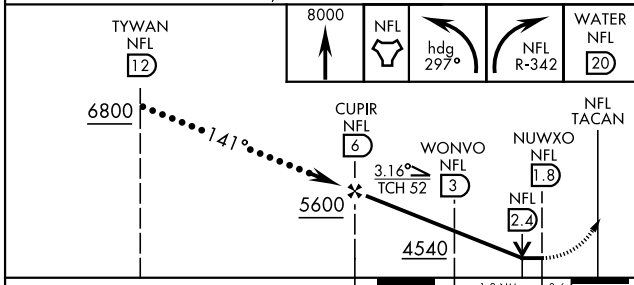
CAUTION: FAC 91' from Rwy centerline at 3000.

CAUTION: Fallon Muni Airport (uncontrolled) 5 NM NW PATTERN alt 800' AGL

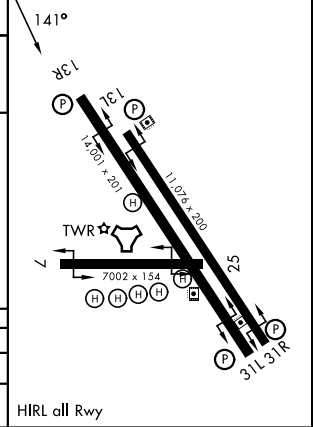
FALLON Chan 82 NFL



EMERG SAFE ALT 100 NM 15,800



ELEV	3935	TDZE	3935
------	------	------	------



CATEGORY	C	D	E
S-13R	4380-1 $\frac{3}{8}$	445 (500-1 $\frac{3}{8}$)	
CIRCLING	4780-2 $\frac{1}{2}$ 845 (900-2 $\frac{1}{2}$)	5120-3 1185 (1200-3)	5160-3 1225 (1300-3)

HIRL all Rwy

FALLON, NEVADA
Amdt 5 02OCT25

39°25'N-118°42'W

FALLON NAS (VAN VOORHIS FLD) (KNFL)

HI-TACAN Z RWY 13R

SW-4, 11 JUN 2026 to 09 JUL 2026

SW-4, 11 JUN 2026 to 09 JUL 2026