

FALLON, NEVADA

# RNAV (GPS) RWY 13R

APCH CRS <b>131°</b>	Rwy Idg <b>14,001</b>
	TDZE <b>3935</b>
	Arpt Elev <b>3935</b>

(USN)

FALLON NAS (VAN VOORHIS FLD) (KNFL)

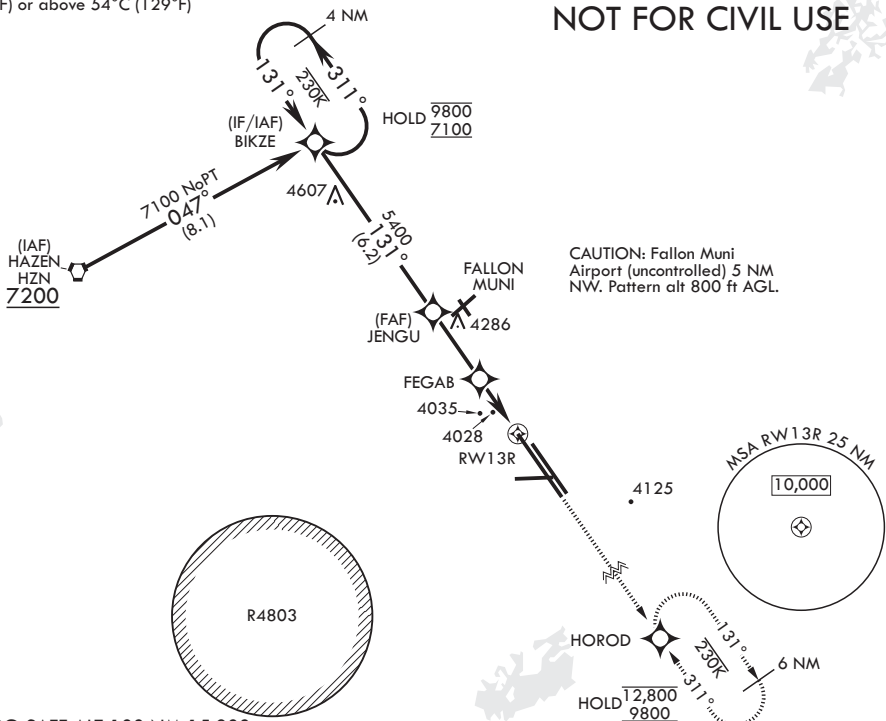
RNP APCH-GPS

MISSED APPROACH: Climb to 4600 then climbing to 9800 direct HOROD and hold, continue climb-in-hold to 9800.

ATIS* <b>370.925</b>	NAVY FALLON APP CON/DEP CON* <b>120.85 360.2</b>	NAVY FALLON TOWER* <b>119.25 340.2</b>	GND CON <b>251.15</b>	ASR/PAR
-------------------------	---	---	--------------------------	---------

For uncompensated Baro-VNAV systems, LNAV/VNAV NA below -22°C (-7°F) or above 54°C (129°F)

**NOT FOR CIVIL USE**



CAUTION: Fallon Muni Airport (uncontrolled) 5 NM NW. Pattern alt 800 ft AGL.

EMERG SAFE ALT 100 NM 15,800

4 NM Holding Pattern BIKZE	4600	9800	HOROD	ELEV 3935	TDZE 3935
GP 3.00° TCH 50					
CATEGORY	A	B	C	D	
LNAV/VNAV DA	4300-1	365	(400-1)		
LNAV MDA	4300-1	365	(400-1)		
CIRCLING	4400-1 465 (500-1)	4440-1 505 (600-1)	4780-2½ 845 (900-2½)	5120-3 1185 (1200-3)	HIRL all rwys

FALLON, NEVADA

39°25'N - 118°42'W

FALLON NAS (VAN VOORHIS FLD) (KNFL)

# RNAV (GPS) RWY 13R

Amdt 5 02OCT25

SW-4, 11 JUN 2026 to 09 JUL 2026

SW-4, 11 JUN 2026 to 09 JUL 2026