

FALLON, NEVADA

RNAV (GPS) RWY 25

APCH CRS	Rwy Idg	7002
254°	TDZE	3928
	Arpt Elev	3935

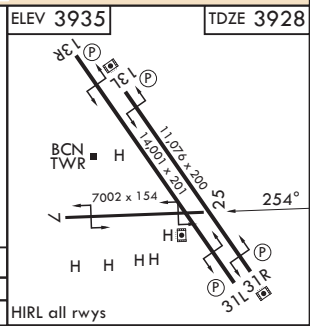
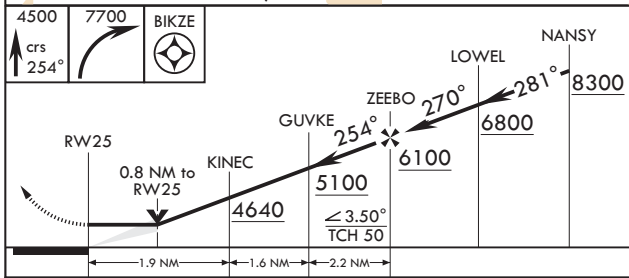
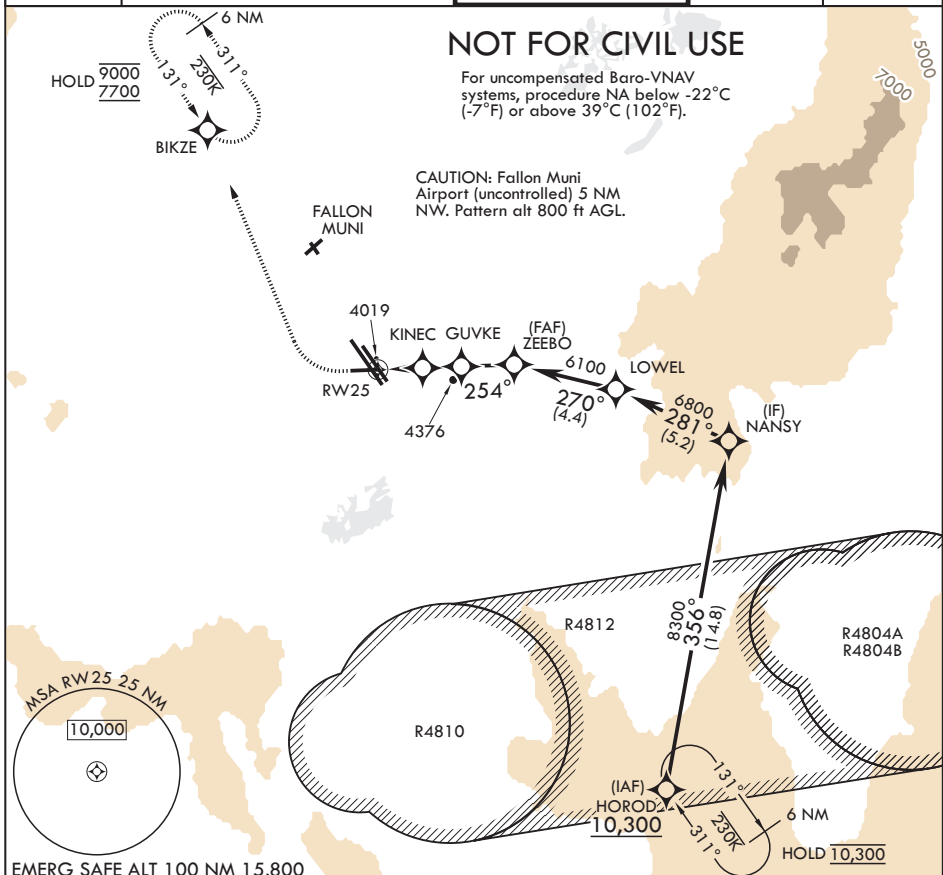
(USN)

FALLON NAS (VAN VOORHIS FLD) (KNFL)

RNP APCH-GPS

MISSED APPROACH: Climb to 4500 then climbing right turn to 7700 direct BIKZE and hold. Continue climb-in-hold to 7700.

ATIS★ 370.925	NAVY FALLON APP CON/DEP CON★ 120.85 360.2	NAVY FALLON TOWER★ 119.25 340.2	GND CON 251.15	ASR/PAR
-------------------------	---	---	--------------------------	---------



CATEGORY	A	B	C	D	ELEV 3935	TDZE 3928
RNAV MDA	4280-1	352	(400-1)		HIRL all rwys	

FALLON, NEVADA

39°25'N - 118°42'W

FALLON NAS (VAN VOORHIS FLD) (KNFL)

Orig 02OCT25

RNAV (GPS) RWY 25

SW-4, 11 JUN 2026 to 09 JUL 2026

SW-4, 11 JUN 2026 to 09 JUL 2026