

# YERIN-EIGHT DEPARTURE (YERIN8.YERIN)

FALLON NAS (VAN VOORHIS FLD) (KNFL)

FALLON, NEVADA

ATIS 370.925 ★  
 CLNC DEL 353.55  
 GND CON 251.15  
 NAVY FALLON TOWER ★  
 119.25 340.2  
 NAVY FALLON APP/DEP CON ★  
 120.85 360.2

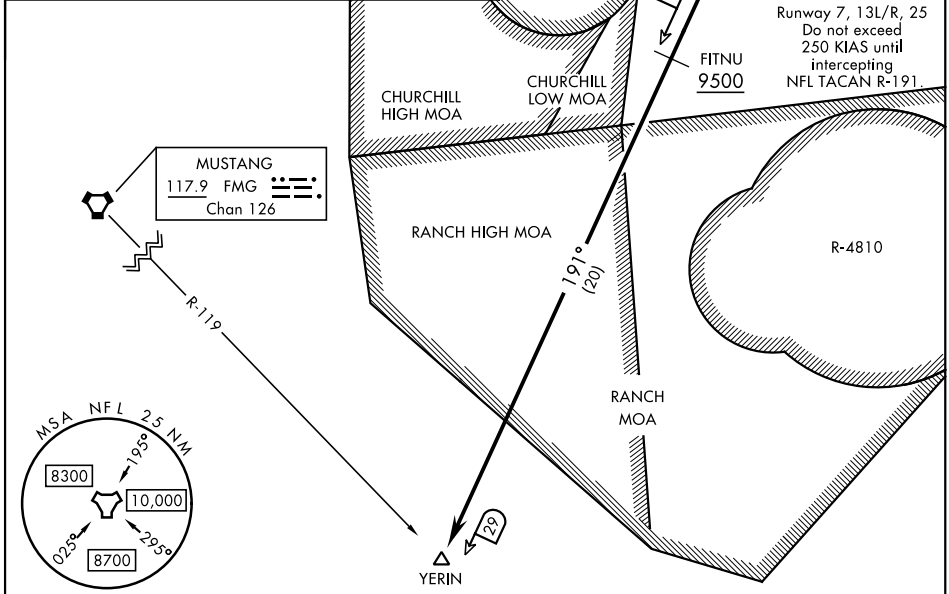
**TOP ALTITUDE**  
**15,000**

[USN] FALLON MUNI  
 CAUTION: Fallon Muni Airport (uncontrolled)  
 5 NM NW Pattern  
 alt 800 AGL

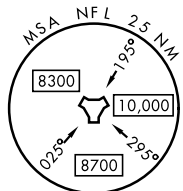
FALLON  
 Chan 82 NFL

Rwy	Knots	60	120	180	240	300	360
7	V/V(fpm)	235	470	705	940	1175	1410
13L/R	V/V(fpm)	255	510	765	1020	1275	1530
25	V/V(fpm)	258	516	774	1032	1290	1548
31L/R	V/V(fpm)	213	426	639	852	1065	1278

Minimum climb rate military and civil to 7500



MUSTANG  
 117.9 FMG  
 Chan 126



## DEPARTURE ROUTE DESCRIPTION

- TAKEOFF RWY 7:** Climb on hdg 074°, then turn right hdg 236° to intercept NFL TACAN R-191 to YERIN. Cross FITNU at or above 9500. Do not exceed 250 KIAS until intercepting NFL R-191.
- TAKEOFF RWY 13L/R:** Climb on hdg 131°, then right turn hdg 236° to intercept NFL TACAN R-191 to YERIN. Cross FITNU at or above 9500. Do not exceed 250 KIAS until intercepting NFL R-191.
- TAKEOFF RWY 25:** Climb on hdg 254°, then left turn hdg 146° to intercept NFL TACAN R-191 to YERIN. Cross FITNU at or above 9500. Do not exceed 250 KIAS until intercepting NFL R-191.
- TAKEOFF RWY 31L/R:** Climb on hdg 311° to 4500, then climbing right turn to NFL TACAN, intercept NFL R-191 to YERIN. Cross FITNU at or above 9500. Do not exceed 250 KIAS until NFL TACAN.

# YERIN-EIGHT DEPARTURE (YERIN8.YERIN)

FALLON, NEVADA

SW-4, 11 JUN 2026 to 09 JUL 2026

SW-4, 11 JUN 2026 to 09 JUL 2026