

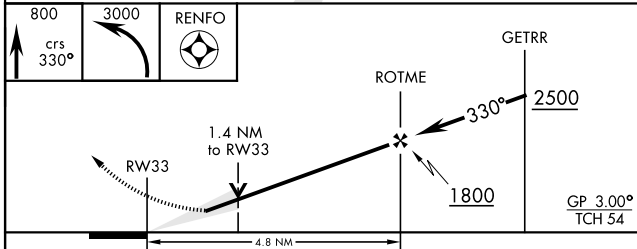
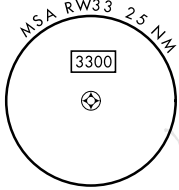
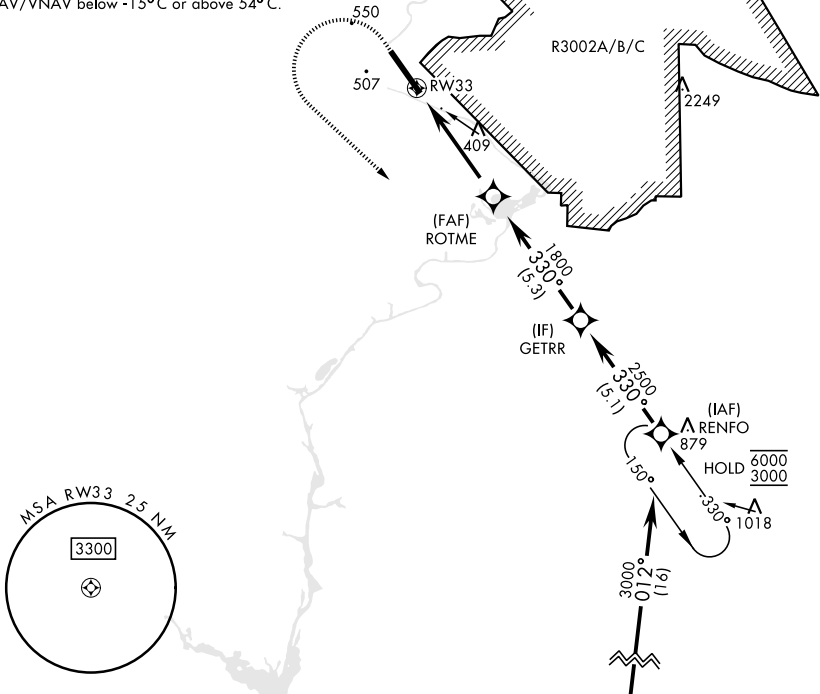
RNAV (GPS) RWY 33

WAAS CH 67545 W33A	APCH CRS 330°	Rwy Idg TDZE Arpt Elev 9302 227 227	[USA]	LAWSON AAF (KLSF)
--	-------------------------	---	-------	-------------------

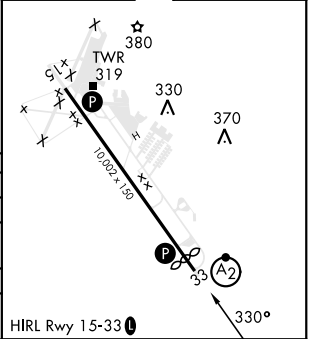
RNP APCH - GPS	SALSF A2	MISSED APPROACH: Climb to 800 then climbing left turn to 3000 direct RENFO and hold.
----------------	--------------------	--

ATIS★ 134.375	ATLANTA APP CON 125.5 323.1	TOWER★ 119.05 (CTAF) 269.525	GND CON 121.7 254.25	CLNC DEL 121.7 251.15
-------------------------	---------------------------------------	--	--------------------------------	---------------------------------

For uncompensated Baro-VNAV systems, LNAV/VNAV below -15°C or above 54°C.



(IAF) SAWES	ELEV 227	TDZE 227
-------------	----------	----------



CATEGORY	A	B	C	D
LPV DA	427/40	200	(200-¾)	
LNAV/VNAV DA*	701/60	474	(500-1½)	
LNAV MDA**	740/40 513 (600-¾)	740-1¼ 513 (600-1¼)		
CIRCLING***	820-1	860-1	960-2	1080-2¾
	593 (600-1)	633 (700-1)	733 (800-2)	853 (900-2¾)

RNAV (GPS) RWY 33

SE-4, 11 JUN 2026 to 09 JUL 2026

SE-4, 11 JUN 2026 to 09 JUL 2026