

VOR/DME RWY 15

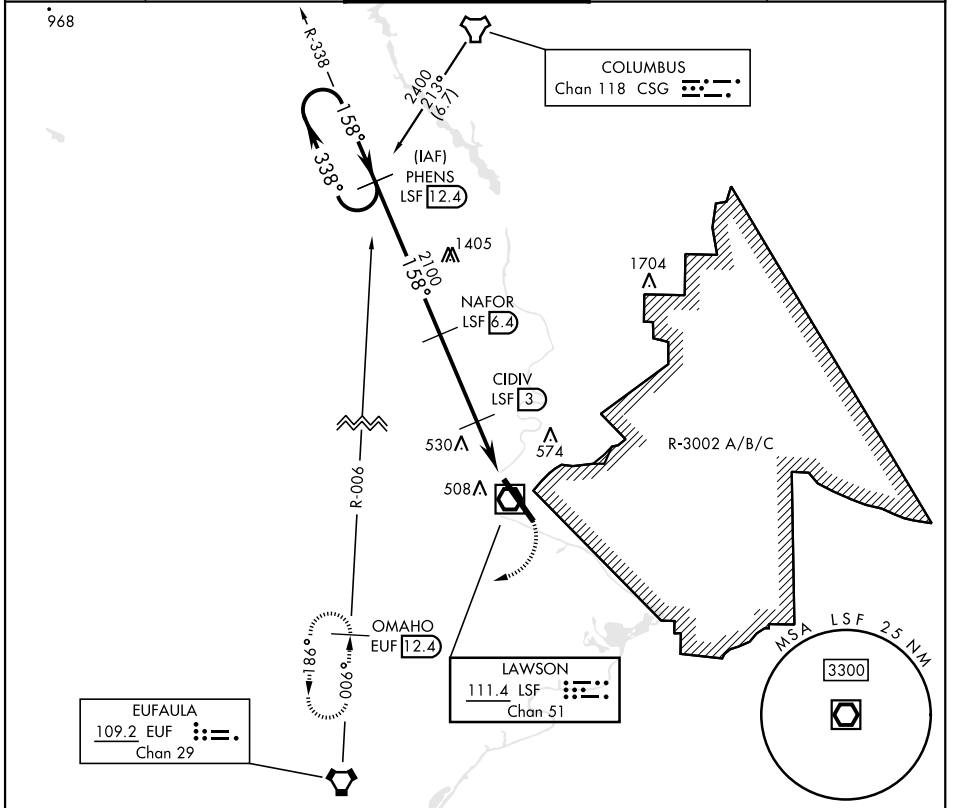
VOR/DME LSF 111.4 Chan 51	APCH CRS 158°	Rwy Idg TDZE Arprt Elev 10,002 227 227
---	-------------------------	--

[USA]

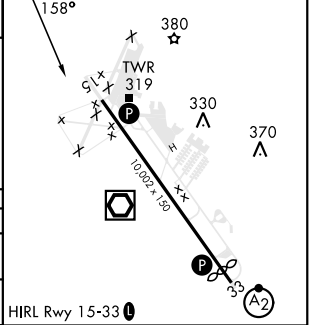
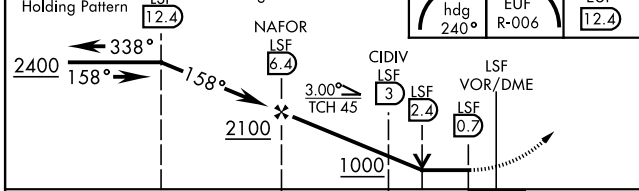
LAWSON AAF (KLSF)

▼ * Circling not authorized E of Rwy 15-33. MISSED APPROACH: Climbing right turn to 2400 via heading 240° and EUF VORTAC R-006 to OMAHO INT/EUF 12.4 DME and hold.

ATIS★ 134.375	ATLANTA APP CON 125.5 323.1	TOWER★ 119.05 (CTAF) 0 269.525	GND CON 121.7 254.25	CLNC DEL 121.7 251.15
-------------------------	---------------------------------------	---	--------------------------------	---------------------------------



One Minute Holding Pattern PHENS LSF 12.4	VGSI and descent angles not coincident.	2400 hdg 240°	OMAHO EUF 12.4	ELEV 227 TDZE 227
---	---	---------------	----------------	-------------------



CATEGORY	A	B	C	D
S-15	820/50	594 (600-1)	820-1½ 594 (600-1½)	820-1¾ 594 (600-1¾)
CIRCLING*	820-1	593 (600-1)	840-1¾ 613 (700-1¾)	880-2 653 (700-2)

VOR/DME RWY 15

SE-4, 11 JUN 2026 to 09 JUL 2026

SE-4, 11 JUN 2026 to 09 JUL 2026