

VOR/DME FBR 114.45 Chan 91(Y)	APP CRS 215°	Rwy Ldg TDZE Apt Elev 6404 7018 7038
---	------------------------	--

VOR RWY 22

FORT BRIDGER (FBR)

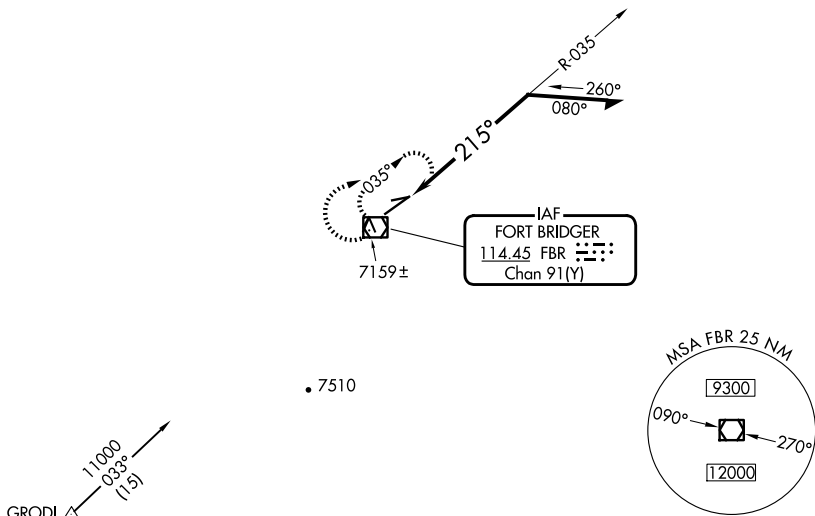
⚠ NA Circling NA to Rwys 7 and 25. When local altimeter setting not received, use Evanston altimeter setting and increase all MDAs 100 feet, increase S-22 Cats C and D and Circling Cat C visibility ¼ SM, and Circling Cat D visibility ½ SM.

MISSED APPROACH:
Climbing right turn to 9000 in FBR VOR/DME holding pattern.

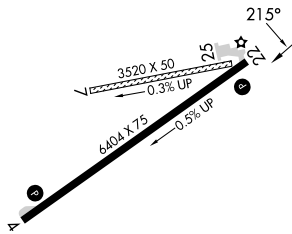
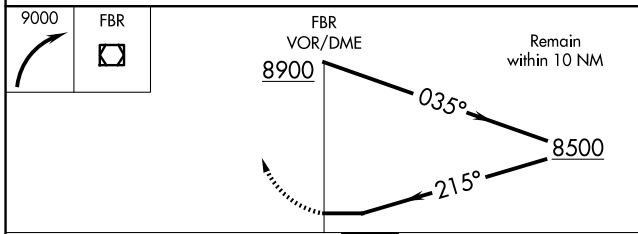
AWOS-3PT
118.8

SALT LAKE CENTER
124.35 353.5

UNICOM
122.8 (CTAF)



ELEV 7038 TDZE 7018



CATEGORY	A	B	C	D
S-22	7440-1	422 (500-1)	7440-1 ¼	422 (500-1 ¼)
CIRCLING	7480-1 442 (500-1)	7500-1 462 (500-1)	7660-1 ¾ 622 (700-1 ¾)	7680-2 642 (700-2)

REIL Rwys 4 and 22
MIRL Rwy 4-22

NW-1, 11 JUN 2026 to 09 JUL 2026

NW-1, 11 JUN 2026 to 09 JUL 2026