

# RNAV (GPS) RWY 15

APCH CRS	Rwy Idg	4853
151°	TDZE	754
	Arprt Elev	754

AL-151 [USA]

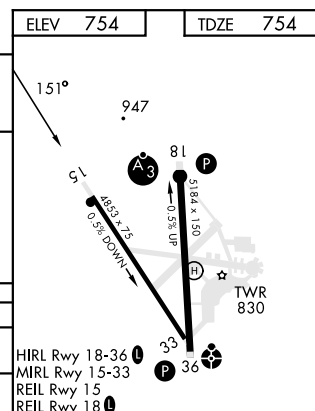
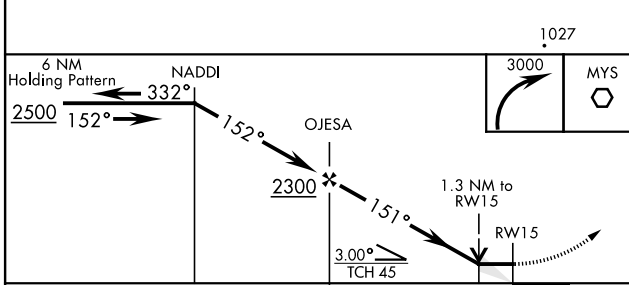
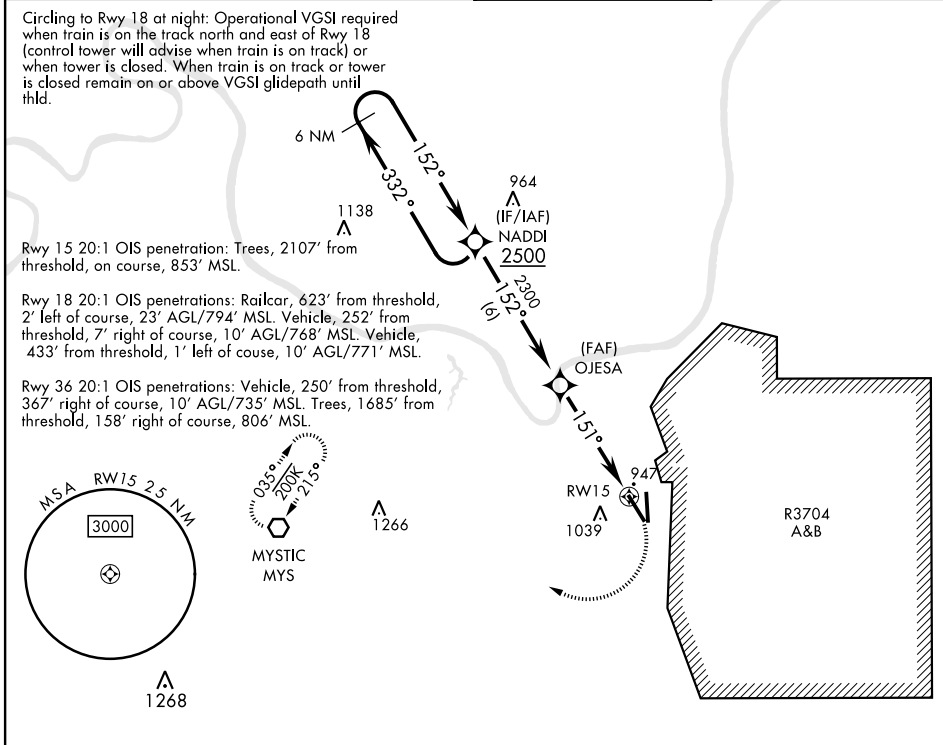
GODMAN AAF (KFTK)

RNP APCH - GPS

▼ \*Straight-in minimums NA at night. Helicopter visibility reduction below 1 mile NA.  
 ▼ \*\*Circling not authorized E of Rwy 18-36. When circling to Rwy 36 at night, operational VGSI required, remain on or above VGSI glidepath until threshold.

MISSED APPROACH: Climbing right turn to 3000 direct MYS VOR and hold.

ATIS <b>109.6</b>	LOUISVILLE APP CON <b>132.075 327.0</b>	TOWER★ <b>133.35 (CTAF) 0</b>	GND CON <b>121.9 239.3</b>
----------------------	--	----------------------------------	-------------------------------



CATEGORY	A	B	C	D
RNAV MDA*	1260-1	506 (600-1)	1260-1 $\frac{3}{8}$	506 (600-1 $\frac{3}{8}$ )
CIRCLING**	1340-1	586 (600-1)	1340-1 $\frac{1}{2}$	586 (600-2)

HIRL Rwy 18-36  
 MIRL Rwy 15-33  
 REIL Rwy 15  
 REIL Rwy 18

# RNAV (GPS) RWY 15

SE-1, 11 JUN 2026 to 09 JUL 2026

SE-1, 11 JUN 2026 to 09 JUL 2026