

FORT KNOX, KENTUCKY

RNAV (GPS) RWY 36

APCH CRS	Rwy ldg	5184
015°	TDZE	740
	Arprt Elev	754

AL-151 [USA]

GODMAN AAF (KF TK)

RNP APCH - GPS

ODALS

MISSED APPROACH: Climbing left turn to 2500 direct HONAL and hold.

▼ * Straight-in Rwy 36 at night, operational VGSI required, remain on or above VGSI glidepath until threshold. When ALS inop, increase CAT CD vis to 1½ miles. Helicopter visibility reduction below 1 mile NA.

ATIS

109.6

LOUISVILLE APP CON

132.075 327.0

TOWER ★

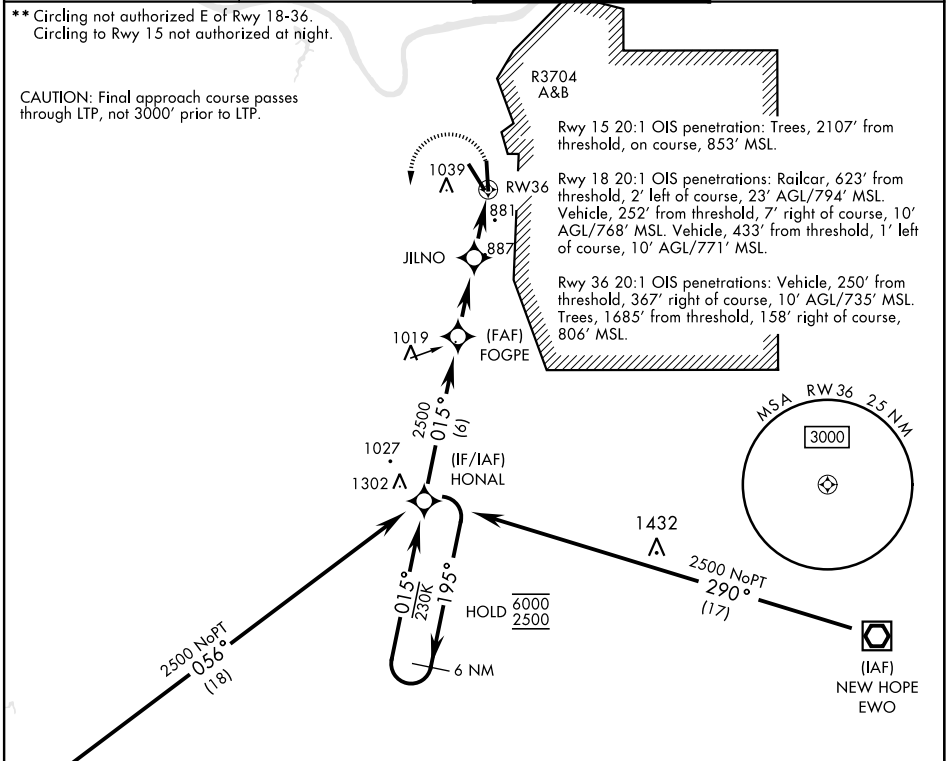
133.35 (CTAF) 0

GND CON

121.9 239.3

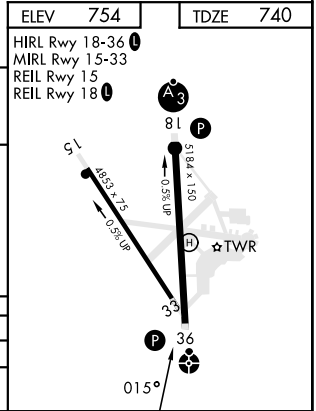
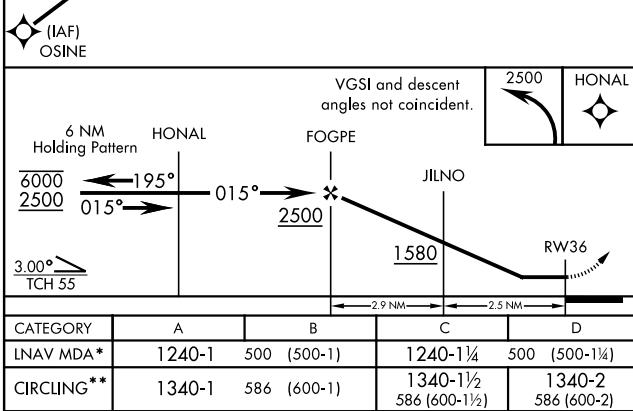
** Circling not authorized E of Rwy 18-36. Circling to Rwy 15 not authorized at night.

CAUTION: Final approach course passes through LTP, not 3000' prior to LTP.



SE-1, 11 JUN 2026 to 09 JUL 2026

SE-1, 11 JUN 2026 to 09 JUL 2026



FORT KNOX, KENTUCKY

37° 54' N-85° 58' W

GODMAN AAF (KF TK)

Amdt 1 13JUL23

RNAV (GPS) RWY 36