

# VOR/DME RWY 15

VOR/DME FTK <b>109.6</b> Chan <b>33</b>	APCH CRS <b>146°</b>	Rwy Ildg TDZE <b>4853</b> <b>754</b> Arprt Elev <b>754</b>
---	-------------------------	---

AL-151 [USA]

GODMAN AAF (KFTK)

▼ \* NA at night.  
Visibility reduction by helicopters NA.

MISSED APPROACH: Climb to 1300, then climbing right turn to 2600 on heading 356° and FTK VOR/DME R-326 to ZOGUN INT/FTK 11.5 DME and hold.

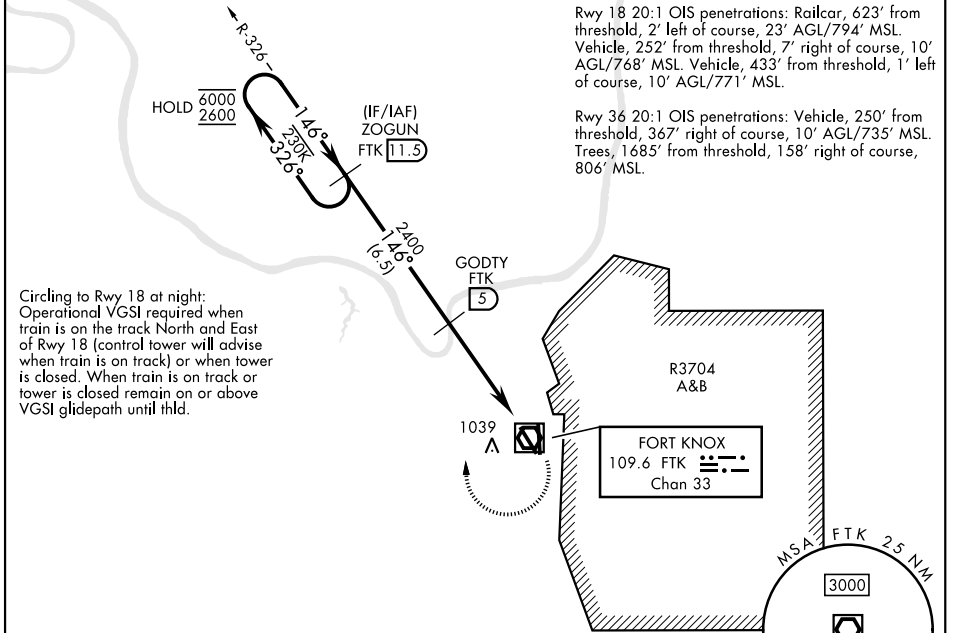
ATIS <b>109.6</b>	LOUISVILLE APP CON <b>132.075 327.0</b>	TOWER ★ <b>133.35</b> (CTAF) 0	GND CON <b>121.9 239.3</b>
----------------------	--	-----------------------------------	-------------------------------

\*\* Circling NA E of Rwy 18-36. When circling to Rwy 36 at night, operational VGSi required, remain on or above VGSi glidepath until threshold.

Rwy 15 20:1 OIS penetration: Trees, 2107' from threshold, on course, 853' MSL.

Rwy 18 20:1 OIS penetrations: Railcar, 623' from threshold, 2' left of course, 23' AGL/794' MSL. Vehicle, 252' from threshold, 7' right of course, 10' AGL/768' MSL. Vehicle, 433' from threshold, 1' left of course, 10' AGL/771' MSL.

Rwy 36 20:1 OIS penetrations: Vehicle, 250' from threshold, 367' right of course, 10' AGL/735' MSL. Trees, 1685' from threshold, 158' right of course, 806' MSL.



Circling to Rwy 18 at night:  
Operational VGSi required when train is on the track North and East of Rwy 18 (control tower will advise when train is on track) or when tower is closed. When train is on track or tower is closed remain on or above VGSi glidepath until thld.

SE-1, 11 JUN 2026 to 09 JUL 2026

SE-1, 11 JUN 2026 to 09 JUL 2026

ELEV 754	TDZE 754
<p>HIRL Rwy 18-36 (P) 36 MIRL Rwy 15-33 REIL Rwy 15 REIL Rwy 18 (P)</p>	
FAF to MAP 4.6 NM	
Knots	60 90 120 150 180
Min:Sec	4:36 3:04 2:18 1:50 1:32
<p>☑ CIRCLING **</p>	

1027			
ZOGUN 11.5			
One Minute Holding Pattern			
CATEGORY	A	B	C
S-15*	1240-1 486 (500-1)		1240-1 3/8 486 (500-1 3/8)
CIRCLING **	1340-1 586 (600-1)		1340-2 586 (600-2)

# VOR/DME RWY 15