

CHIEF NINE DEPARTURE

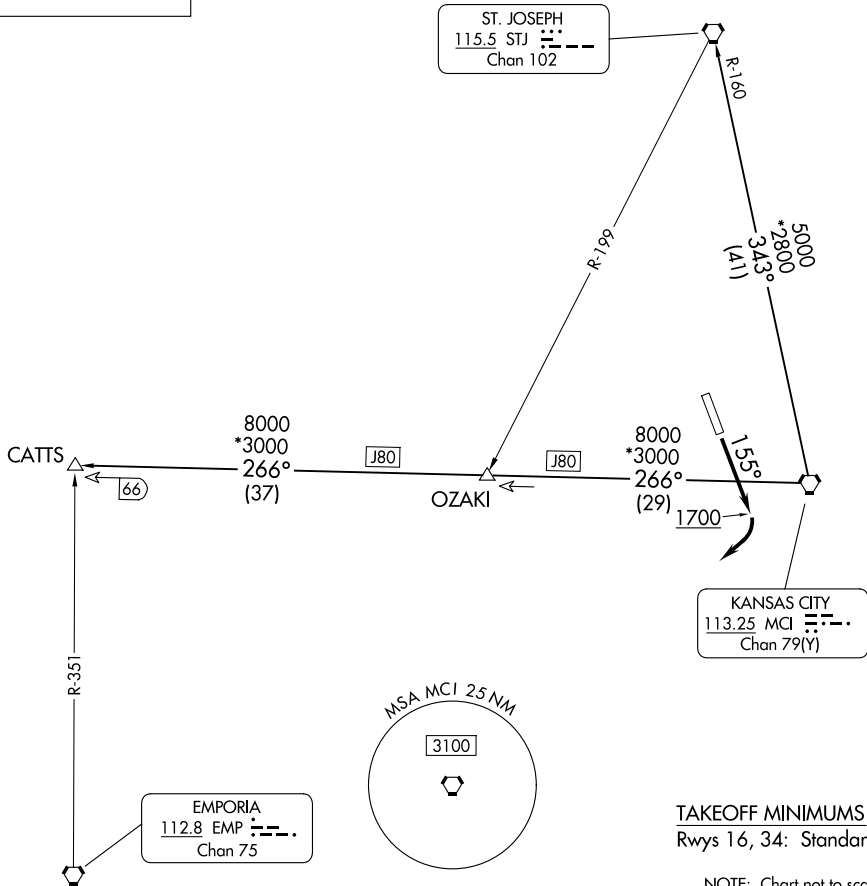
AL-152 (FAA)

SHERMAN AAF (F'L V)
FORT LEAVENWORTH, KANSAS

KANSAS CITY DEP CON
124.7 284.7

**TOP ALTITUDE:
10000**

RADAR required.



NC-2, 11 JUN 2026 to 09 JUL 2026

NC-2, 11 JUN 2026 to 09 JUL 2026



DEPARTURE ROUTE DESCRIPTION

TAKEOFF RUNWAY 16: Climb on heading 155° to 1700 before turning southwest, thenceclimb on assigned heading for RADAR vectors to appropriate route. Maintain 10000 or as assigned by ATC, expect filed altitude 10 minutes after departure.

TAKEOFF RUNWAY 34: Climb on assigned heading for RADAR vectors to appropriate route. Maintain 10000 or as assigned by ATC, expect filed altitude 10 minutes after departure.

CATTS TRANSITION (CHIEF9.CATTS): From over MCI VORTAC on MCI R-266 to CATTS.

ST. JOSEPH TRANSITION (CHIEF9.STJ): From over MCI VORTAC on MCI R-343 and STJ R-160 to STJ VORTAC.

CHIEF NINE DEPARTURE