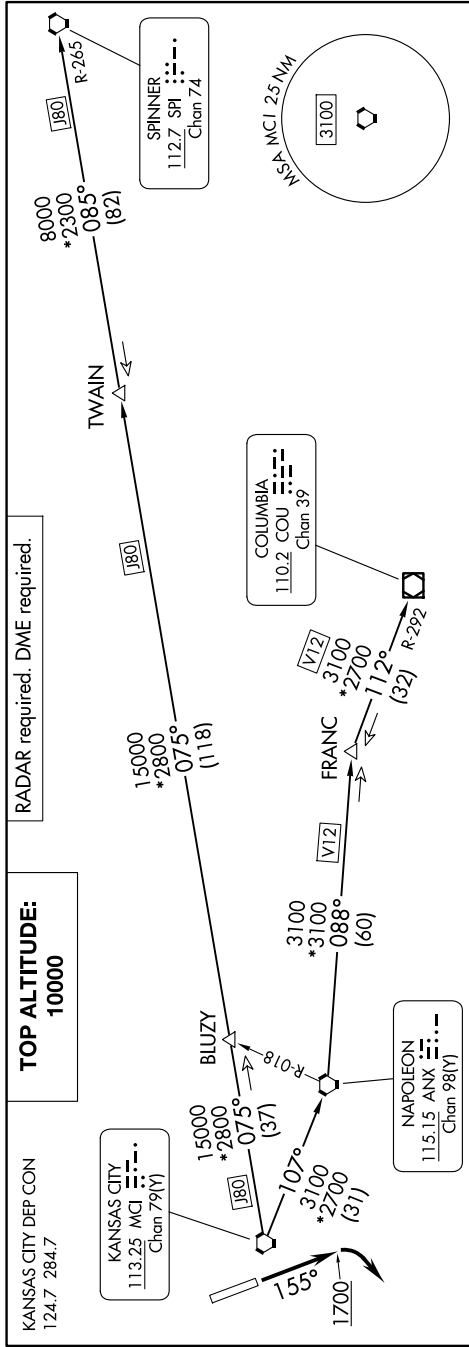


LAKES FIVE DEPARTURE

9202 20R 60 01 920202 NR02 11 7-Z-CN



DEPARTURE ROUTE DESCRIPTION

TAKEOFF RUNWAY 16: Climb on heading 155° to 1700 before turning southwest, thence . . . climb on assigned heading for RADAR vectors to appropriate route. Maintain 10000 or as assigned by ATC, expect filed altitude 10 minutes after departure.

TAKEOFF RUNWAY 34: Climb on assigned heading for RADAR vectors to appropriate route. Maintain 10000 or as assigned by ATC, expect filed altitude 10 minutes after departure.

COLUMBIA TRANSITION (LAKES5.COU): From over MCI VORTAC on MCI R-107 to ANX VORTAC, then on ANX R-088 and COU R-292 to COU VOR/DME.

FRANC TRANSITION (LAKES5.FRANC): From over MCI VORTAC on MCI R-107 to ANX VORTAC, then on ANX R-088 to FRANC.

SPINNER TRANSITION (LAKES5.SPI): From over MCI VORTAC on MCI R-075 and SPI R-265 to TWAIN, then on SPI R-265 to SPI VORTAC.

TWAIN TRANSITION (LAKES5.TWAIN): From over MCI VORTAC on MCI R-075 and SPI R-265 to TWAIN.

TAKEOFF MINIMUMS
Rwys 16, 34: Standard.

NOTE: Chart not to scale.

LAKES FIVE DEPARTURE