

APP CRS	Rwy Ldg	<b>5318</b>
<b>335°</b>	TDZE	<b>769</b>
	Apt Elev	<b>771</b>

# RNAV (GPS) RWY 34

SHERMAN AAF (FLV)

RNP APCH - GPS.

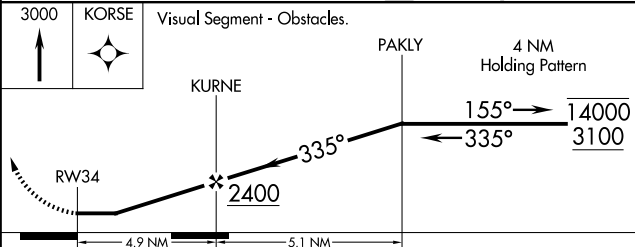
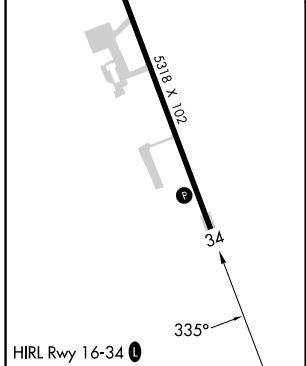
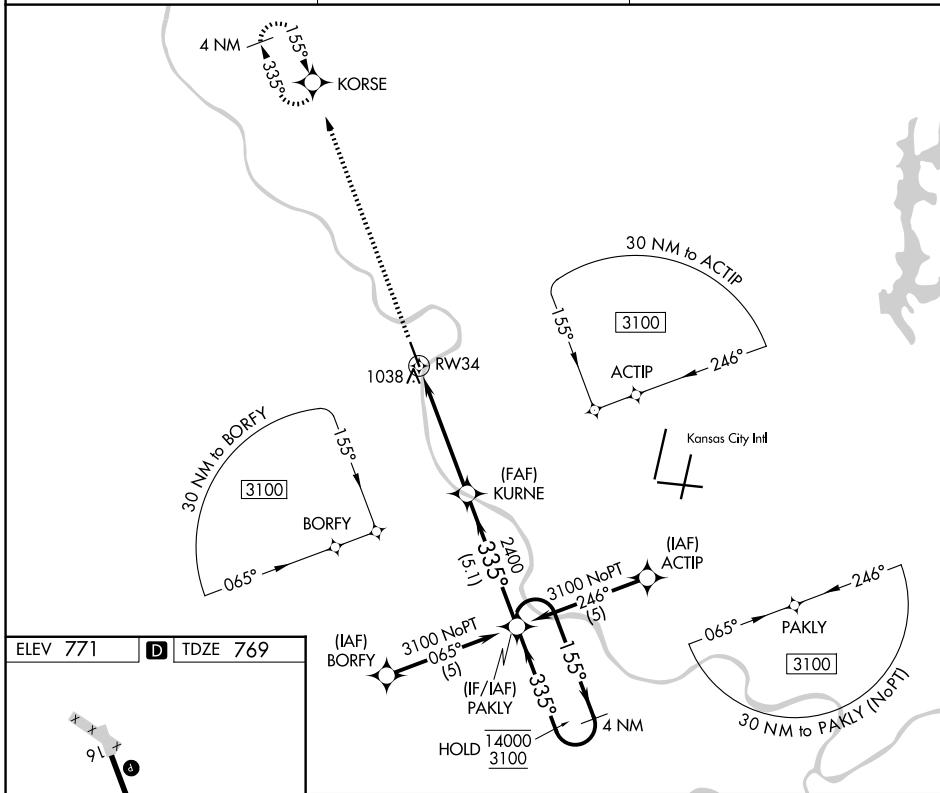
**NA** Circling NA west of Rwy 16-34. Procedure NA at night. Rwy 34 helicopter visibility reduction below 1 SM NA. Use Kansas City Intl altimeter setting.

**MISSED APPROACH:** Climb to 3000 direct KORSE and hold.

MCI ASOS  
**128.375**

KANSAS CITY APP CON  
**124.7 284.7**

CTAF  
**126.2**



CATEGORY	A	B	C	D
LNAV MDA	1560-1 791 (800-1)	1560-1¼ 791 (800-1¼)	1560-2½ 791 (800-2½)	NA
CIRCLING	1560-1 789 (800-1)	1560-1¼ 789 (800-1¼)	1560-2½ 789 (800-2½)	NA

NC-2, 11 JUN 2026 to 09 JUL 2026

NC-2, 11 JUN 2026 to 09 JUL 2026