

(TIFTO8.MCI) 23278

# TIFTO EIGHT DEPARTURE

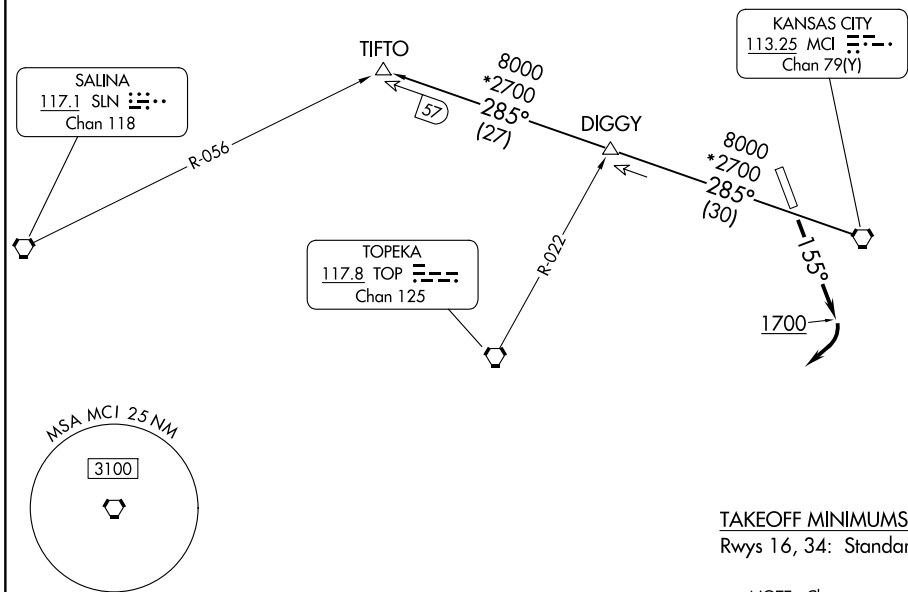
AL-152 (FAA)

SHERMAN AAF (F'L V)  
FORT LEAVENWORTH, KANSAS

**TOP ALTITUDE:  
10000**

RADAR and DME required.

KANSAS CITY DEP CON  
124.7 284.7



NC-2, 11 JUN 2026 to 09 JUL 2026

NC-2, 11 JUN 2026 to 09 JUL 2026

**TAKEOFF MINIMUMS**  
Rwys 16, 34: Standard.

NOTE: Chart not to scale.



## DEPARTURE ROUTE DESCRIPTION

TAKEOFF RUNWAY 16: Climb on heading 155° to 1700 before turning southwest, thence. . . .climb on assigned heading for RADAR vectors to appropriate route. Maintain 10000, expect filed altitude 10 minutes after departure.

TAKEOFF RUNWAY 34: Climb on assigned heading for RADAR vectors to appropriate route. Maintain 10000, expect filed altitude 10 minutes after departure.

TIFTO TRANSITION (TIFTO8.TIFTO): From over MCI VORTAC on MCI R-285 to TIFTO.

# TIFTO EIGHT DEPARTURE

(TIFTO8.MCI) 05OCT23

FORT LEAVENWORTH, KANSAS  
SHERMAN AAF (F'L V)