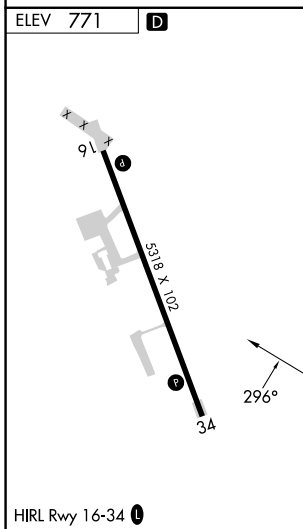
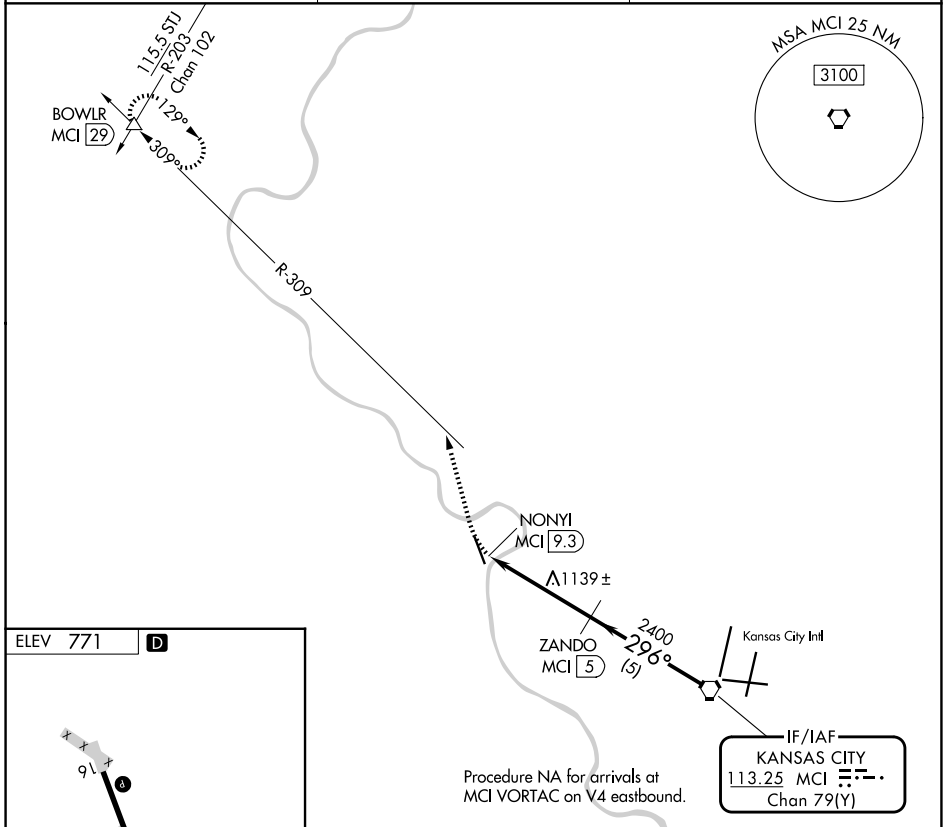


VORTAC MCI 113.25 Chan 79(Y)	APP CRS 296°	Rwy Ldg TDZE Apt Elev N/A 771
--	------------------------	--

VOR-A
SHERMAN AAF (F^LV)

DME required.	MISSED APPROACH: Climbing right turn to 3000 on heading 340° and MCI R-309 to BOWLR and hold.
<p>Procedure NA at night. Circling NA west of Rwy 16-34. Use Kansas City Intl altimeter setting.</p>	

MCI ASOS 128.375	KANSAS CITY APP CON 124.7 284.7	CTAF 126.2
----------------------------	---	----------------------



3000	MCI R-309	BOWLR	MCI VORTAC	
hdg 340°		△	ZANDO MCI (5)	
	NONYI MCI (9.3)		2400	4000
			296°	
	4.3 NM		5 NM	
CATEGORY	A	B	C	D
CIRCLING	1460-1	689 (700-1)	1500-2 729 (800-2)	1640-2¾ 869 (900-2¾)

NC-2, 11 JUN 2026 to 09 JUL 2026

NC-2, 11 JUN 2026 to 09 JUL 2026