

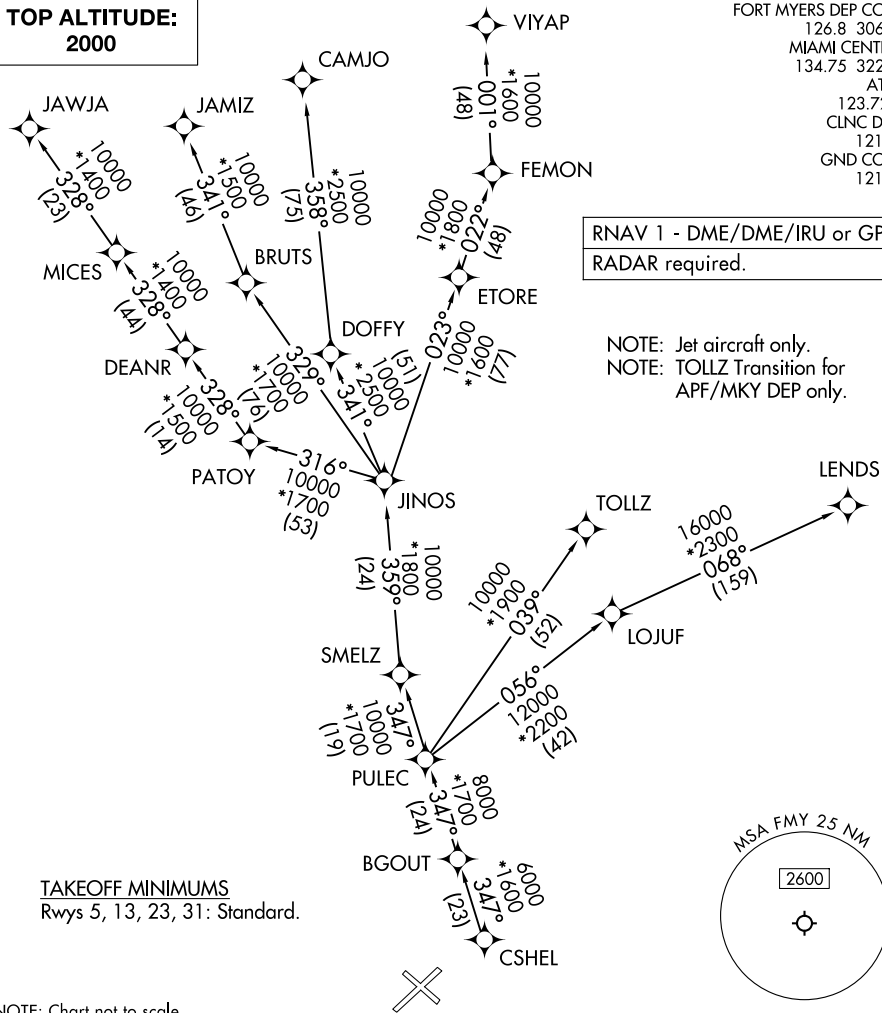
# CSHEL EIGHT DEPARTURE (RNAV)

**TOP ALTITUDE:  
2000**

FORT MYERS DEP CON\*  
 126.8 306.2  
 MIAMI CENTER  
 134.75 322.5  
 ATIS  
 123.725  
 CLNC DEL  
 121.7  
 GND CON  
 121.7

RNAV 1 - DME/DME/IRU or GPS.  
 RADAR required.

NOTE: Jet aircraft only.  
 NOTE: TOLLZ Transition for  
 APF/MKY DEP only.



TAKEOFF MINIMUMS  
 Rwys 5, 13, 23, 31: Standard.

NOTE: Chart not to scale.

## DEPARTURE ROUTE DESCRIPTION

TAKEOFF ALL RUNWAYS: Climb on assigned heading for vectors to CSHEL on assigned transition. Maintain 2000. Expect filed altitude 10 minutes after departure.

- CAMJO TRANSITION (CSHEL8.CAMJO)
- JAMIZ TRANSITION (CSHEL8.JAMIZ)
- JAWJA TRANSITION (CSHEL8.JAWJA)
- LEND S TRANSITION (CSHEL8.LEND S)
- TOLLZ TRANSITION (CSHEL8.TOLLZ)
- VIYAP TRANSITION (CSHEL8.VIYAP)

SE-3, 11 JUN 2026 to 09 JUL 2026

SE-3, 11 JUN 2026 to 09 JUL 2026