

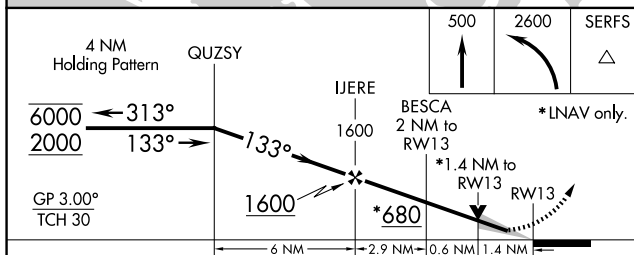
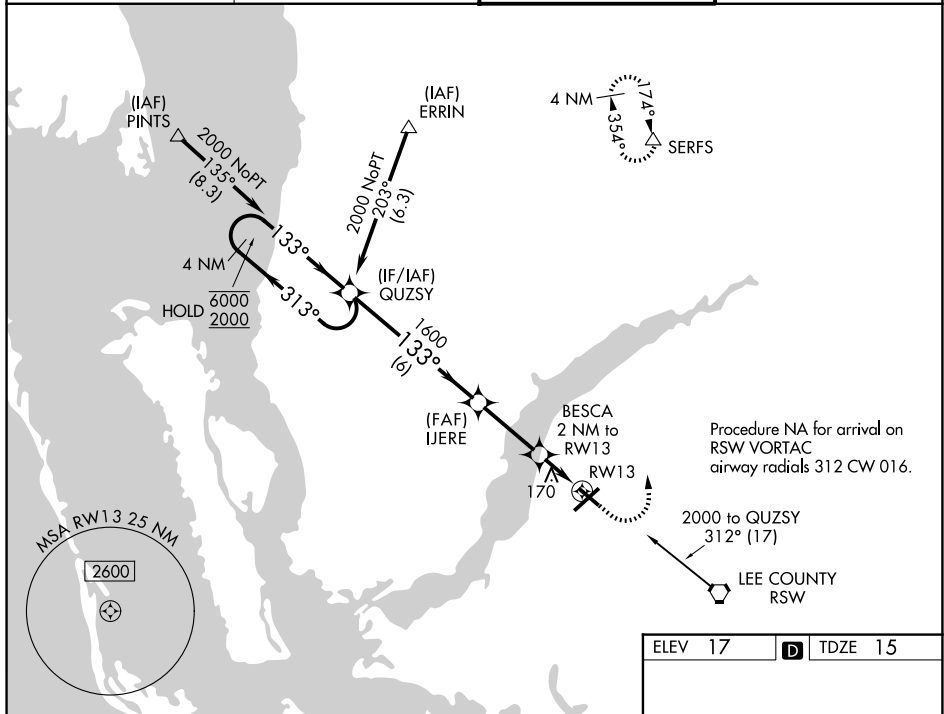
WAAS CH 73024 W13A	APP CRS 133°	Rwy Ldg TDZE Apt Elev	4296 15 17
--	------------------------	-----------------------------	---------------------------------------

RNAV (GPS) RWY 13

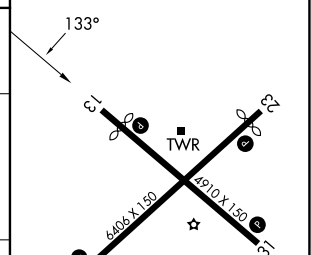
PAGE FLD (FMYY)

RNP APCH.	<p>When Circling to Rwy 31 at night, operational VGSI required, remain on or above VGSI glidepath until threshold. For uncompensated Baro-VNAV systems, LNAV/VNAV NA below -15°C or above 54°C.</p>	<p>MISSED APPROACH: Climb to 500 then climbing left turn to 2600 direct SERFS and hold.</p>
-----------	---	---

ATIS 123.725	FORT MYERS APP CON ★ 125.15 306.2 (5, 13) 126.8 306.2 (23, 31)	PAGE TOWER ★ 119.0 (CTAF) 306.95	GND CON 121.7
------------------------	--	---	-------------------------



ELEV 17	TDZE 15
---------	---------



CATEGORY	A	B	C	D
LPV DA	265-1	250 (300-1)		
LNAV/VNAV DA	480-1½	465 (500-1½)		
LNAV MDA	480-1	465 (500-1)	480-1½	465 (500-1½)
CIRCLING	540-1	523 (600-1)	600-1½	680-2
			583 (600-1½)	663 (700-2)

REIL Rwys 5, 13, 23 and 31
MIRL Rwy 5-23 and 13-31

SE-3, 11 JUN 2026 to 09 JUL 2026

SE-3, 11 JUN 2026 to 09 JUL 2026