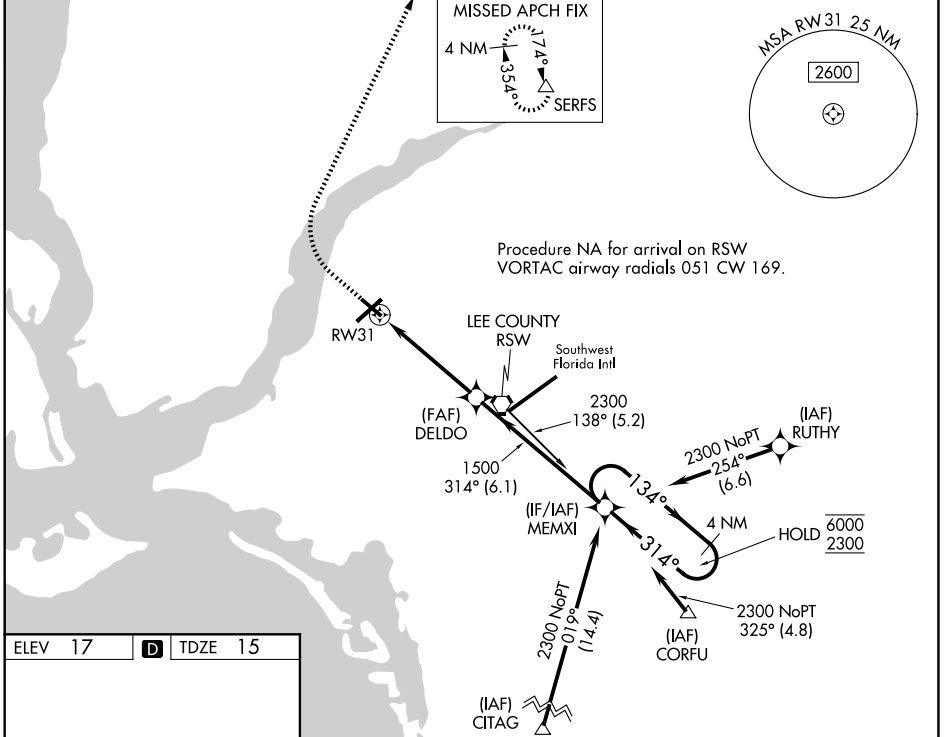


WAAS CH <b>50524</b> <b>W31A</b>	APP CRS <b>314°</b>	Rwy Ldg <b>4705</b> TDZE <b>15</b> Apt Elev <b>17</b>
--	------------------------	---

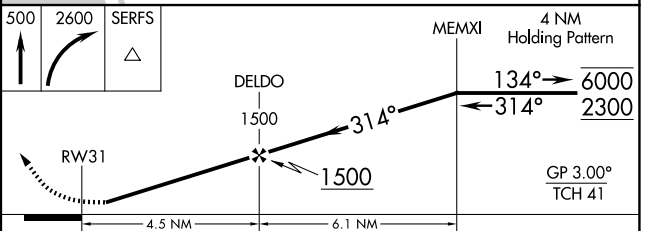
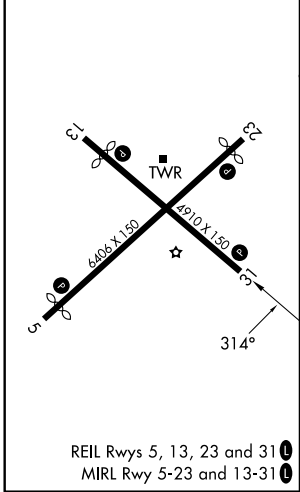
# RNAV (GPS) RWY 31

PAGE FLD (FMY)

RNP APCH		MISSED APPROACH: Climb to 500 then climbing right turn to 2600 direct SERFS and hold.	
Rwy 31 helicopter visibility reduction below 1 SM NA. For uncompensated Baro-VNAV systems, LNAV/VNAV NA below 4°C or above 54°C. Straight-in Rwy 31 at night, Circling Rwy 31 at night, operational VGSI required, remain on or above VGSI glidepath until threshold.			
ATIS <b>123.725</b>	FORT MYERS APP CON ★ <b>125.15 306.2</b> (5, 13) <b>126.8 306.2</b> (23, 31)	PAGE TOWER ★ <b>119.0</b> (CTAF) <b>0 306.95</b>	GND CON <b>121.7</b>



ELEV 17	<b>D</b>	TDZE 15
---------	----------	---------



CATEGORY	A	B	C	D
LPV DA		265-1	250 (300-1)	
LNAV/VNAV DA		377-1	362 (400-1)	
LNAV MDA	480-1	465 (500-1)	480-1 <sup>3</sup> / <sub>8</sub>	465 (500-1 <sup>3</sup> / <sub>8</sub> )
CIRCLING	540-1	523 (600-1)	600-1 <sup>1</sup> / <sub>2</sub> 583 (600-1 <sup>1</sup> / <sub>2</sub> )	680-2 663 (700-2)

SE-3, 11 JUN 2026 to 09 JUL 2026

SE-3, 11 JUN 2026 to 09 JUL 2026