

WAAS CH 72624 W05A	APP CRS 051°	Rwy Ldg 5545 TDZE 15 Apt Elev 17
---------------------------------	------------------------	---

RNAV (GPS) RWY 5

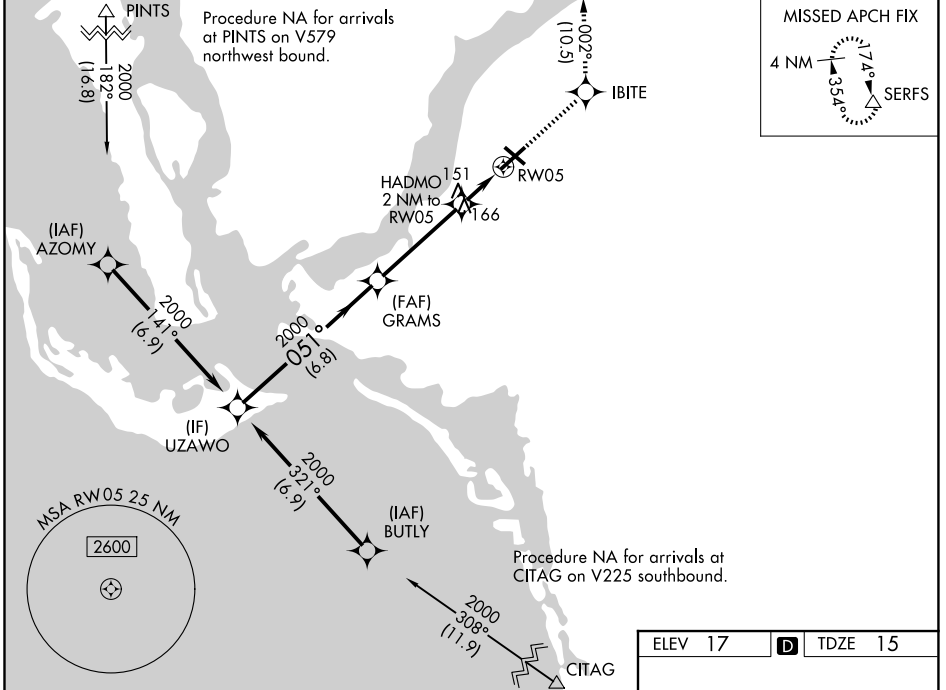
PAGE FLD (FMY)

RNP APCH.

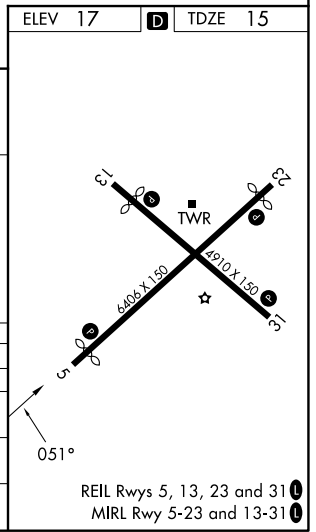
▼ When Circling to Rwy 31 at night, operational VGSI required, remain on or above VGSI glidepath until threshold. Rwy 5 helicopter visibility reduction below 3/4 SM NA. For uncompensated Baro-VNAV systems, LNAV/VNAV NA below 4°C or above 54°C.

MISSED APPROACH: Climb to 2600 direct IBITE and on track 002° to SERFS and hold.

ATIS 123.725	FORT MYERS APP CON ★ 125.15 306.2 (5, 13) 126.8 306.2 (23, 31)	PAGE TOWER ★ 119.0 (CTAF) 0 306.95	GND CON 121.7
------------------------	--	---	-------------------------



	ELEV 17	TDZE 15
	IBITE	SERFS
	↑ 2600	tr 002°
UZAWO	GRAMS	
2000	2000	
GP 3.00°	051°	
TCH 53	2000	
	HADMO 2 NM to RW05	*LNAV only.
	*1.1 NM to RW05	
	*700	
	RW05	
	6.8 NM	4.1 NM
	0.9 NM	1.1 NM
CATEGORY	A	B
LPV DA	265-3/4	250 (300-3/4)
LNAV/VNAV DA	317-7/8	302 (300-7/8)
LNAV MDA	420-1 405 (500-1)	420-1 1/8 405 (500-1 1/8)
CIRCLING	540-1 523 (600-1)	600-1 1/2 583 (600-1 1/2) 680-2 663 (700-2)



SE-3, 11 JUN 2026 to 09 JUL 2026

SE-3, 11 JUN 2026 to 09 JUL 2026