

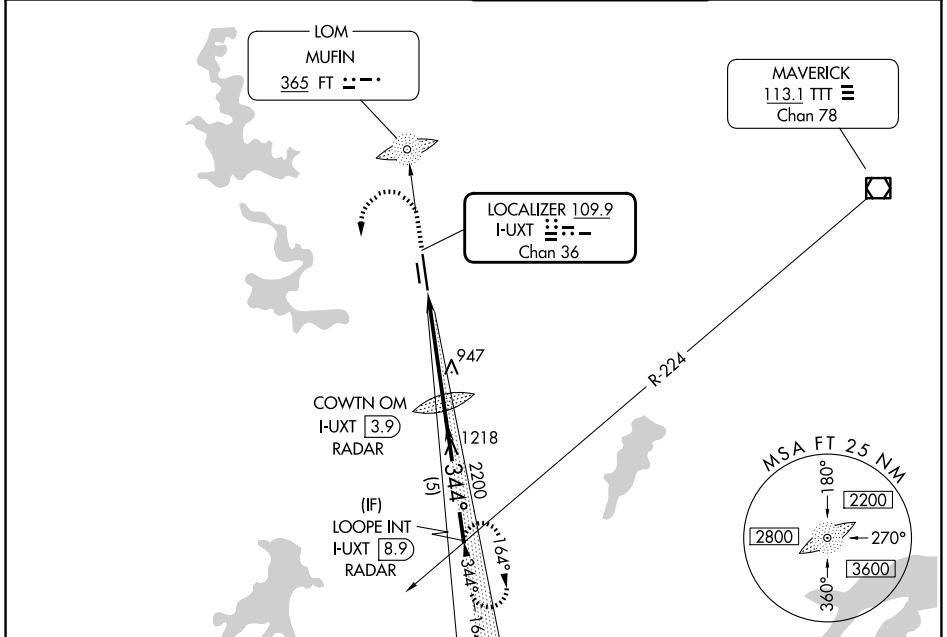
LOC I-UXT <b>109.9</b> Chan <b>36</b>	APP CRS <b>344°</b>	Rwy Ldg TDZE Apt Elev	<b>7306</b> <b>680</b> <b>710</b>
---	------------------------	-----------------------------	---

# ILS or LOC RWY 34

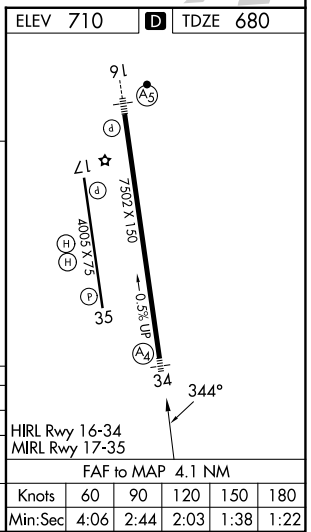
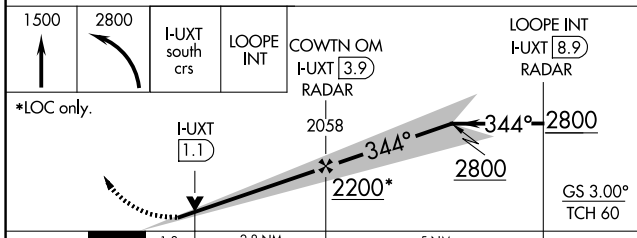
FORT WORTH MEACHAM INTL (FTW)

	MALS 	MISSED APPROACH : Climb to 1500, then climbing left turn to 2800 via I-UXT south course to LOOPE Int/ I-UXT 8.9 DME and hold.

ATIS <b>120.7</b>	LONE STAR APP CON <b>118.1 306.95 (N)</b> <b>135.975 379.9 (S)</b>	MEACHAM TOWER <b>118.3 257.8</b>	GND CON <b>121.9</b>
----------------------	--	-------------------------------------	-------------------------



## RADAR REQUIRED



ELEV 710	<b>D</b>	TDZE 680				
CATEGORY	A	B	C	D		
S- ILS 34	880-3/4 200 (200-3/4)					
S-LOC 34	1200-3/4 520 (500-3/4)	1200-1 1/2 520 (500-1 1/2)	1200-1 3/4 520 (500-1 3/4)	1200-1 3/4 520 (500-1 3/4)		
CIRCLING	1260-1 550 (600-1)	1280-1 570 (600-1)	1340-1 3/4 630 (700-1 3/4)	1500-2 1/2 790 (800-2 1/2)		
	HIRL Rwy 16-34 MRL Rwy 17-35					
	FAF to MAP 4.1 NM					
	Knots	60	90	120	150	180
	Min:Sec	4:06	2:44	2:03	1:38	1:22

SC-2, 11 JUN 2026 to 09 JUL 2026

SC-2, 11 JUN 2026 to 09 JUL 2026