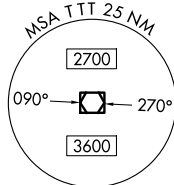


JOE POOL EIGHT DEPARTURE

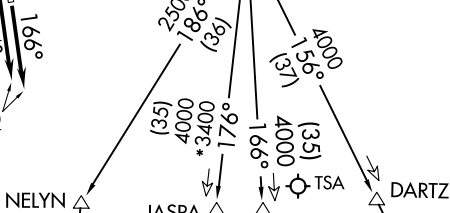
LONE STAR DEP CON
135.975 379.9
ATIS
120.7
CLNC DEL
124.65
GND CON
121.9
MEACHAM TOWER
118.3 257.8

RADAR and DME required.

**TOP ALTITUDE:
ASSIGNED BY ATC**



MAVERICK
113.1 TTT
Chan 78



NELYN

JASPA

ARDIA

DARTZ

WACO
115.3 ACT
Chan 100

3800

2100

177°

(38)

R-357

6000

2400

176°

(45)

R-120

BRDEN

6000

2300

156°

(23)

R-89

6000

2300

156°

(35)

R-70

ELLVR

7000

2300

166°

(35)

R-074

LEONA
110.8 LOA
Chan 45

R-093

7000

2300

154°

(18)

R-77

6000

2300

154°

(21)

R-87

6000

2300

154°

(21)

R-121

6000

2300

154°

(21)

R-269

6000

2300

154°

(21)

R-334

6000

2300

154°

(21)

R-334

6000

2300

154°

(21)

R-334

6000

2300

154°

(21)

R-334

6000

2300

154°

(21)

R-334

6000

2300

154°

(21)

R-334

6000

2300

154°

(21)

R-334

6000

2300

154°

(21)

R-334

6000

2300

154°

(21)

R-334

6000

2300

154°

(21)

R-334

6000

2300

154°

(21)

R-334

6000

2300

154°

(21)

R-334

6000

2300

154°

(21)

R-334

6000

2300

154°

(21)

R-334

6000

2300

154°

(21)

R-334

6000

2300

154°

(21)

R-334

6000

2300

154°

(21)

R-334

6000

2300

154°

(21)

R-334

CENTEX
112.8 CWK
Chan 75

SAN ANTONIO
116.8 SAT
Chan 115

COLLEGE STATION
113.3 CLL
Chan 80

TAKEOFF MINIMUMS

Rwys 16, 17: Standard.

Rwy 34: 300-1 $\frac{1}{2}$ or standard with minimum climb of 225'/NM to 1100, or alternatively, with standard takeoff minimums and a normal 200'/NM climb gradient, takeoff must occur no later than 2000' prior to DER.

Rwy 35: 300-1 $\frac{1}{4}$ or standard with minimum climb of 210'/NM to 900, or alternatively, with standard takeoff minimums and a normal 200'/NM climb gradient, takeoff must occur no later than 1300' prior to DER.

(CONTINUED ON FOLLOWING PAGE)

NOTE: Chart not to scale.

JOE POOL EIGHT DEPARTURE

SC-2, 11 JUN 2026 to 09 JUL 2026

SC-2, 11 JUN 2026 to 09 JUL 2026