

# KINGDOM FIVE DEPARTURE

SC-2, 11 JUN 2026 to 09 JUL 2026

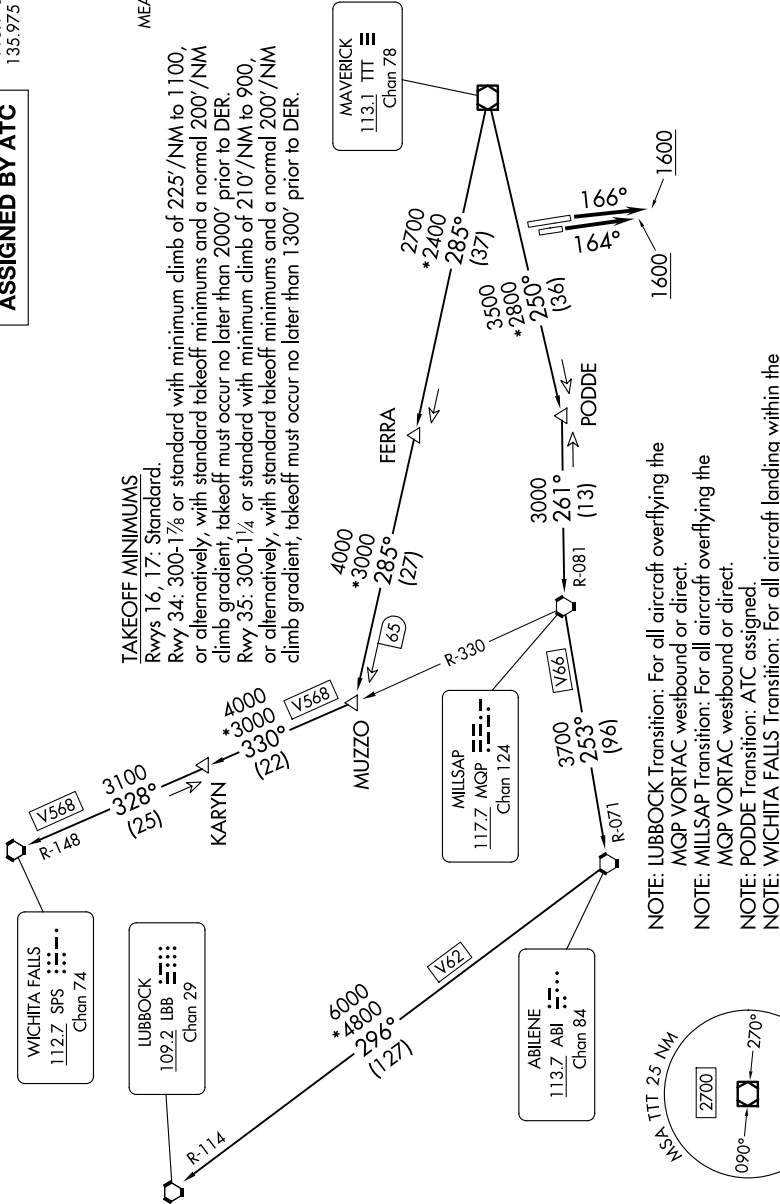
RADAR and DME required.

## TOP ALTITUDE: ASSIGNED BY ATC

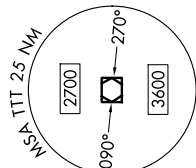
LONE STAR DEP CON  
 118.1 306.95 (NORTH)  
 135.975 379.9 (SOUTH)  
 ATIS  
 120.7  
 CLNC DEL  
 124.65  
 GND CON  
 121.9  
 MEACHAM TOWER  
 118.3 257.8

### TAKEOFF MINIMUMS

Rwy 16, 17: Standard.  
 Rwy 34: 300-1 $\frac{1}{4}$  or standard with minimum climb of 225'/NM to 1100', or alternatively, with standard takeoff minimums and a normal 200'/NM climb gradient, takeoff must occur no later than 2000' prior to DER.  
 Rwy 35: 300-1 $\frac{1}{4}$  or standard with minimum climb of 210'/NM to 900', or alternatively, with standard takeoff minimums and a normal 200'/NM climb gradient, takeoff must occur no later than 1300' prior to DER.



- NOTE: LUBBOCK Transition: For all aircraft overlying the MQP VORTAC westbound or direct.
- NOTE: MILLSAP Transition: For all aircraft overlying the MQP VORTAC westbound or direct.
- NOTE: PODDE Transition: ATC assigned.
- NOTE: WICHITA FALLS Transition: For all aircraft landing within the Wichita Falls terminal area or overlying the SPS VORTAC.
- NOTE: For all aircraft requesting 17000 and below.



NOTE: Chart not to scale.

(CONTINUED ON FOLLOWING PAGE)

SC-2, 11 JUN 2026 to 09 JUL 2026

# KINGDOM FIVE DEPARTURE