

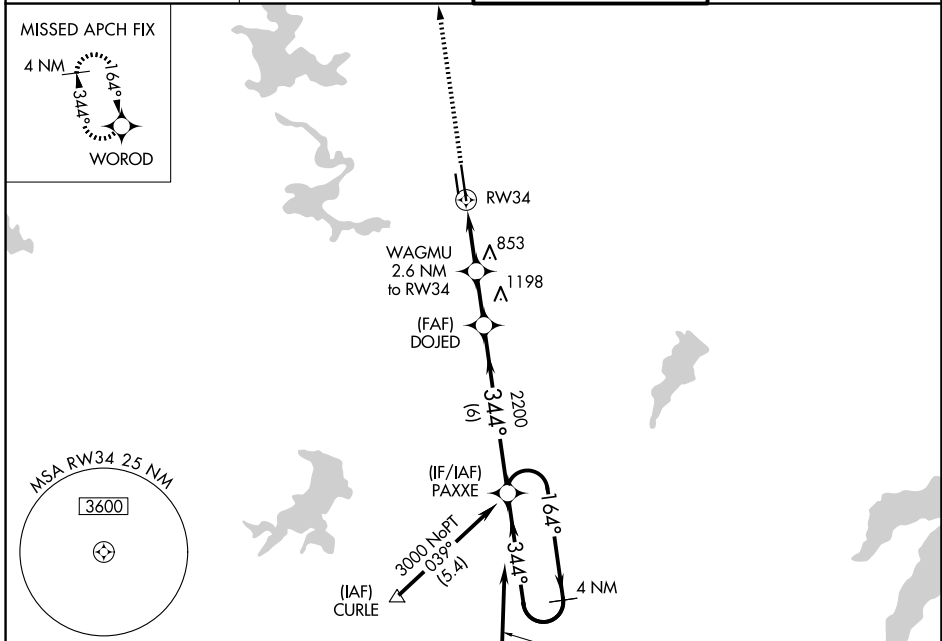
WAAS CH <b>53412</b> <b>W34A</b>	APP CRS <b>344°</b>	Rwy Ldg <b>7306</b> TDZE <b>680</b> Apt Elev <b>710</b>
--	------------------------	---

# RNAV (GPS) RWY 34

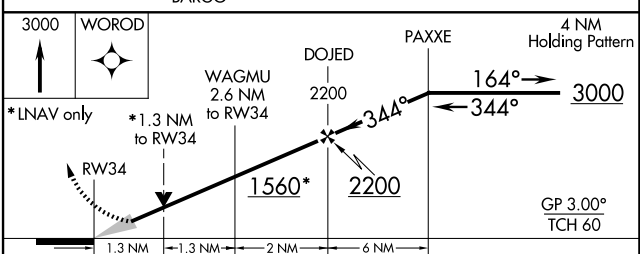
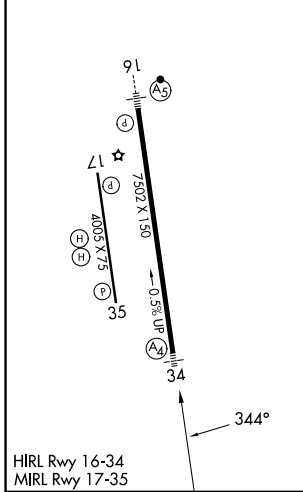
FORT WORTH MEACHAM INTL (FTW)

<p><b>⚠</b> For uncompensated Baro-VNAV systems, LNAV/VNAV NA below -5°C (23°F) or above 54°C (130°F). DME/DME RNP-0.3 NA. For inop MALS, increase LNAV/VNAV Cat D and LNAV Cat D visibility to 1½ mile.</p>	<p>MALS </p>	<p>MISSED APPROACH: Climb to 3000 direct WOROD and hold.</p>
--	------------------	--

<p>ATIS <b>120.7</b></p>	<p>LONE STAR APP CON <b>118.1 306.95 (N)</b> <b>135.975 379.9 (S)</b></p>	<p>MEACHAM TOWER <b>118.3 257.8</b></p>	<p>GND CON <b>121.9</b></p>
------------------------------	---	---	---------------------------------



ELEV 710	<b>D</b>	TDZE 680
----------	----------	----------



CATEGORY	A	B	C	D
LPV DA		880-¾	200 (200-¾)	
LNAV/VNAV DA		1091-1½	411 (400-1½)	
LNAV MDA	1160-¾	480 (500-¾)	1160-1½	480 (500-1½)
CIRCLING	1260-1 550 (600-1)	1280-1 570 (600-1)	1340-1¾ 630 (700-1¾)	1500-2½ 790 (800-2½)

SC-2, 11 JUN 2026 to 09 JUL 2026

SC-2, 11 JUN 2026 to 09 JUL 2026