

HI-ILS Y or LOC Y RWY 18

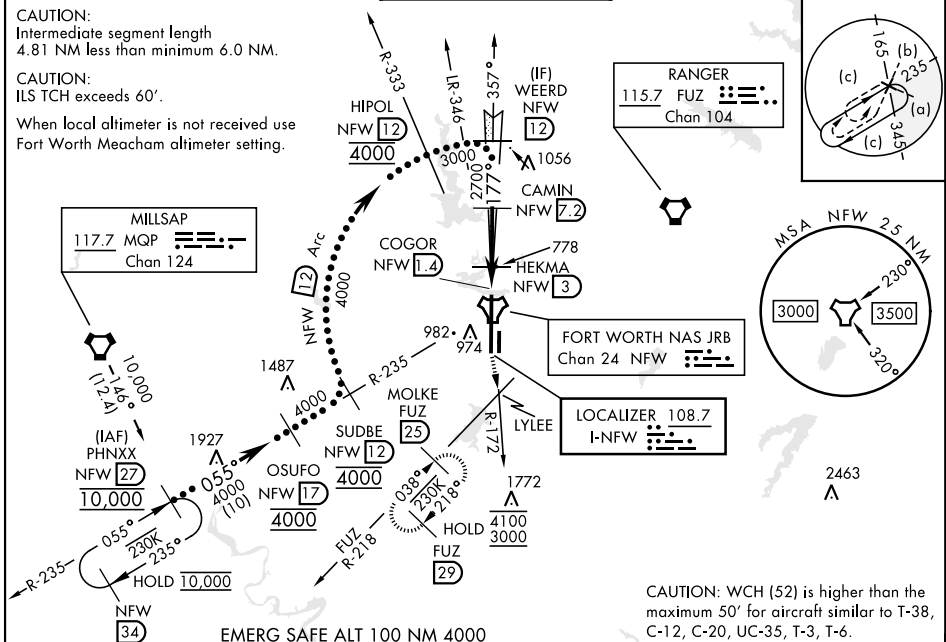
LOC I-NFW 108.7	APCH CRS 177°	Rwy ldg 11,999 TDZE 636 Arprt Elev 650	[USN]	FORT WORTH NAS JRB (CARSWELL FLD) (KNFW)
---------------------------	-------------------------	---	-------	--

FUZ VORTAC or RADAR required. DME required.

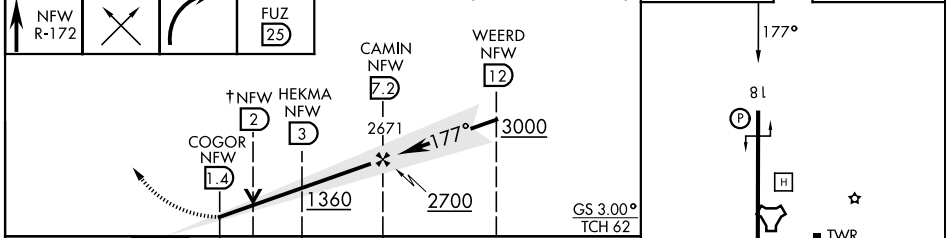
* Circling not authorized E of Rwy 18-36.

MISSED APPROACH: Climb to 3000 on NFW TACAN R-172 to LYLEE, and right turn direct MOLKE and hold.

ATIS ★ 351.675	LONE STAR APP CON 125.8 257.95	NAVY FORT WORTH TOWER★ 120.95 269.325	GND CON 121.675 279.575	ASR/PAR
--------------------------	--	---	-----------------------------------	---------



3000 NFW R-172	LYLEE	MOLKE FUZ 25	↑ VDP NA when using FTW altimeter setting	ELEV 650	TDZE 636
----------------	-------	--------------	---	----------	----------



CATEGORY	C	D	E
S-ILS 18	836- $\frac{3}{4}$	200	(200- $\frac{3}{4}$)
S-LOC 18	1040-1 $\frac{1}{8}$	404	(400-1 $\frac{1}{8}$)
CIRCLING *	1320-1 $\frac{3}{4}$ 670 (700-1 $\frac{3}{4}$)	1400-2 $\frac{1}{2}$ 750 (800-2 $\frac{1}{2}$)	1420-2 $\frac{3}{4}$ 770 (800-2 $\frac{3}{4}$)
FORT WORTH MEACHAM ALTIMETER			
S-ILS 18	856- $\frac{3}{4}$	220	(300- $\frac{3}{4}$)
S-LOC 18	1060-1 $\frac{1}{4}$	424	(500-1 $\frac{1}{4}$)
CIRCLING *	1340-2 690 (700-2)	1420-2 $\frac{1}{2}$ 770 (800-2 $\frac{1}{2}$)	1440-2 $\frac{3}{4}$ 790 (800-2 $\frac{3}{4}$)

FORT WORTH, TEXAS 32° 46' N-97° 26' W FORT WORTH NAS JRB (CARSWELL FLD) (KNFW)

HI-ILS Y or LOC Y RWY 18

SC-2, 11 JUN 2026 to 09 JUL 2026

SC-2, 11 JUN 2026 to 09 JUL 2026

