

# HI-TACAN Y RWY 18

TACAN NFW Chan <b>24</b>	APCH CRS <b>172°</b>	Rwy ldg <b>11,999</b> TDZE <b>636</b> Arprt Elev <b>650</b>	[USN]	FORT WORTH NAS JRB (CARSWELL FLD) (KNFW)
-----------------------------	-------------------------	---	-------	--

FUZ VORTAC or RADAR required.

\*Circling not authorized E of Rwy 18-36.

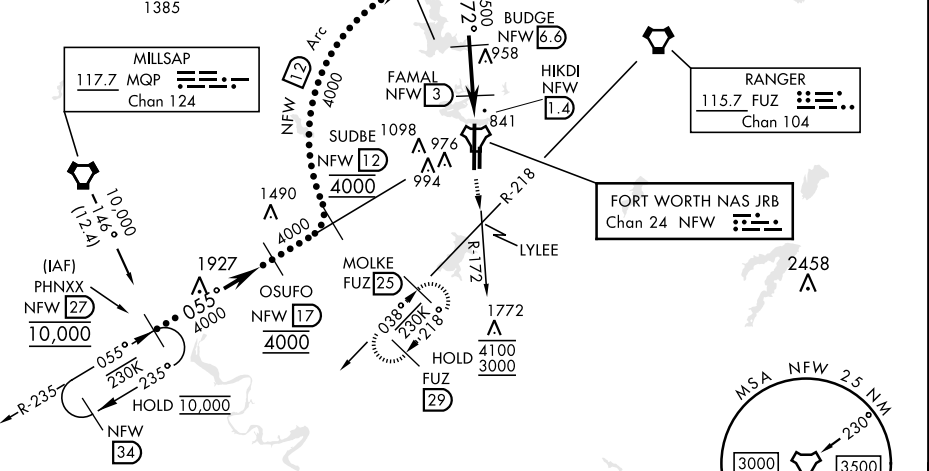
MISSED APPROACH: Climb to 3000 direct LYLEE to intercept FUZ VORTAC R-218 to MOLKE and hold.

ATIS ★ <b>351.675</b>	LONE STAR APP CON <b>125.8 257.95</b>	NAVY FORT WORTH TOWER★ <b>120.95 269.325</b>	GND CON <b>121.675 279.575</b>	ASR/PAR
--------------------------	--	---	-----------------------------------	---------

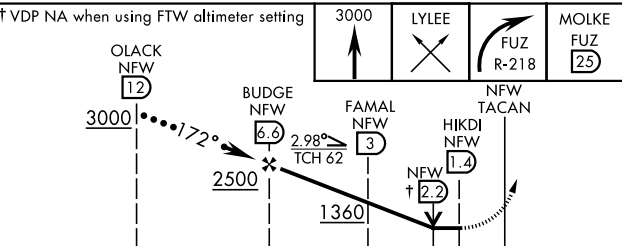
When local altimeter is not received use Fort Worth Meacham altimeter setting.

CAUTION: Intermediate length 5.4 NM less than minimum 6 NM.

CAUTION: TCH exceeds 60 ft.

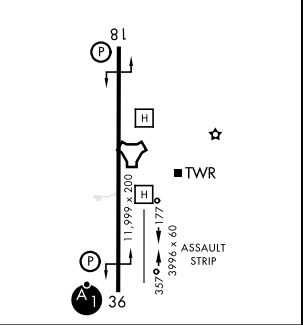


EMERG SAFE ALT 100 NM 4000



ELEV 650	TDZE 636
172°	REIL Rwy 18 HIRL Rwy 18-36

CATEGORY	C	D	E
S-18	1120-1 $\frac{3}{8}$	484	(500-1 $\frac{3}{8}$ )
CIRCLING *	1320-1 $\frac{3}{4}$ 670 (700-1 $\frac{3}{4}$ )	1400-2 $\frac{1}{2}$ 750 (800-2 $\frac{1}{2}$ )	1420-2 $\frac{3}{4}$ 770 (800-2 $\frac{3}{4}$ )
FORT WORTH MEACHAM ALTIMETER			
S-18	1140-1 $\frac{3}{8}$	504	(500-1 $\frac{3}{8}$ )
CIRCLING *	1340-2 690 (700-1)	1420-2 $\frac{1}{2}$ 770 (800-2 $\frac{1}{2}$ )	1440-2 $\frac{3}{4}$ 790 (800-2 $\frac{3}{4}$ )



FORT WORTH, TEXAS 32°46'N-97°26'W FORT WORTH NAS JRB (CARSWELL FLD) (KNFW)

Amtd 1 14MAY26

# HI-TACAN Y RWY 18

SC-2, 11 JUN 2026 to 09 JUL 2026

SC-2, 11 JUN 2026 to 09 JUL 2026