

FORT WORTH, TEXAS

ILS Z or LOC Z RWY 18

LOC I-NFW 108.7	APCH CRS 177°	Rwy Ldg 11,999 TDZE 636 Arprt Elev 650
---------------------------	-------------------------	---

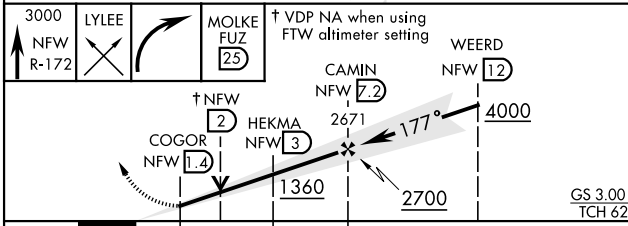
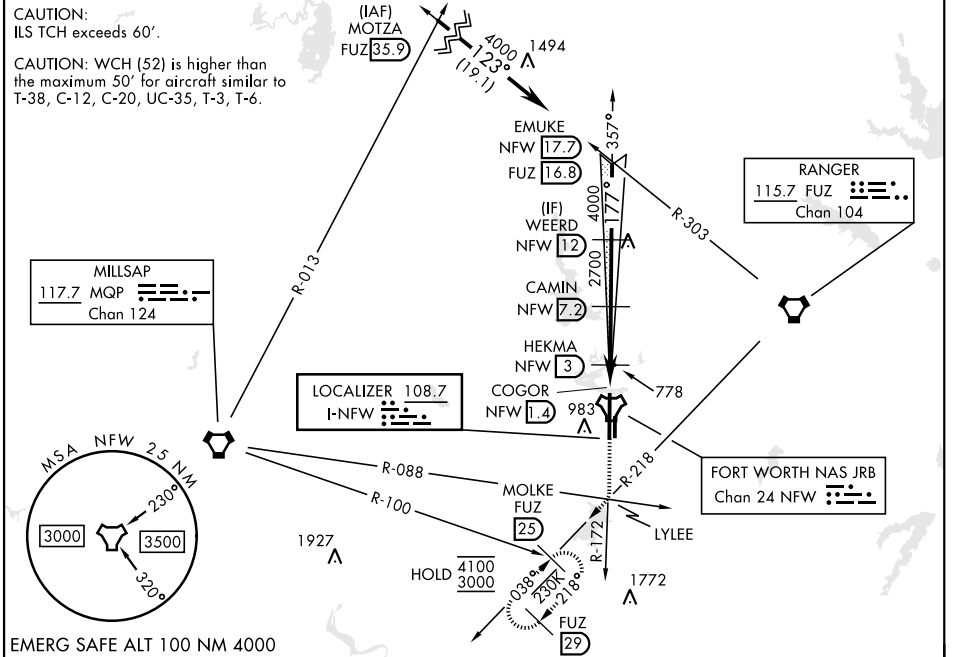
[USN] FORT WORTH NAS JRB (CARSWELL FLD) (KNFW)

DME required. FUZ VORTAC or RADAR required

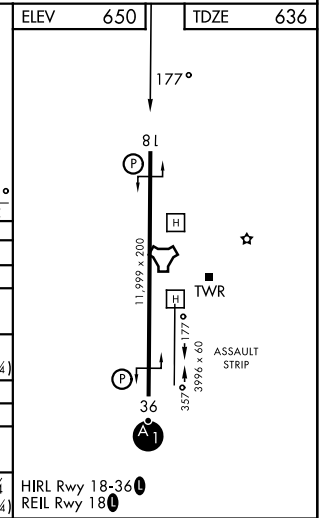
▼ When local altimeter is not received, use Fort Worth Meacham altimeter setting.
* Circling not authorized E of Rwy 18-36.

MISSED APPROACH: Climb to 3000 on NFW TACAN R-172 to LYLEE, and right turn direct MOLKE and hold.

ATIS ★ 351.675	LONE STAR APP CON 125.8 257.95	NAVY FORT WORTH TOWER★ 120.95 269.325	GND CON 121.675 279.575	ASR/PAR
--------------------------	--	---	-----------------------------------	---------



CATEGORY	A	B	C	D	E
S-ILS 18	836-¾		200	(200-¾)	
S-LOC 18	1040-1	404 (400-1)	1040-1½	404 (400-1½)	
CIRCLING*	1220-1	1320-1	1320-1¾	1400-2½	1420-2¾
	570 (600-1)	670 (700-1)	670 (700-1¾)	750 (800-2½)	770 (800-2¾)
FORT WORTH MEACHAM ALTIMETER					
S-ILS 18	856-¾		220	(300-¾)	
S-LOC 18	1060-1	424 (500-1)	1060-1½	424 (500-1½)	
CIRCLING*	1240-1	1340-1	1340-2	1420-2½	1440-2¾
	590 (600-1)	690 (700-1)	690 (700-2)	770 (800-2½)	790 (800-2¾)



FORT WORTH, TEXAS 32°46'N-97°26'W FORT WORTH NAS JRB (CARSWELL FLD) (KNFW)

Amtd 1 14MAY26

ILS Z or LOC Z RWY 18

SC-2, 11 JUN 2026 to 09 JUL 2026

SC-2, 11 JUN 2026 to 09 JUL 2026