

# NANDR FOUR DEPARTURE (RNAV)

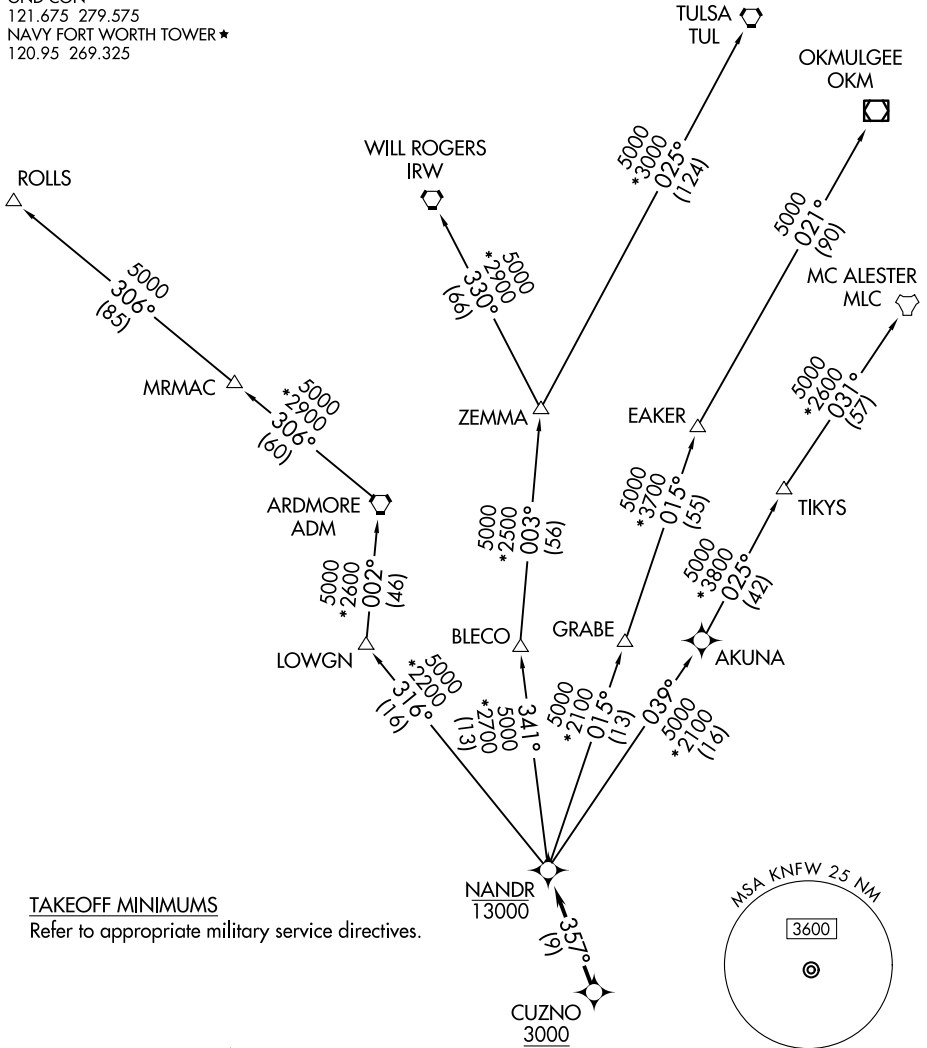
AL-160 (FAA)

FORT WORTH, TEXAS

LONE STAR DEP CON  
 125.8 257.95  
 ATIS\*  
 351.675  
 GND CON  
 121.675 279.575  
 NAVY FORT WORTH TOWER\*  
 120.95 269.325

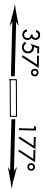
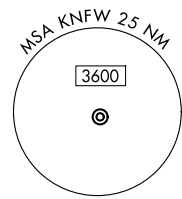
RNAV 1 - DME/DME/IRU or GPS required.  
 RADAR required.

**TOP ALTITUDE:  
 ASSIGNED BY ATC**



### TAKEOFF MINIMUMS

Refer to appropriate military service directives.



NOTE: EAKER Transition: For TUL terminal arrivals only.  
 NOTE: TULSA Transition: For all aircraft overflying TUL VORTAC.  
 NOTE: Aircraft arriving to the Oklahoma City terminal area, file and expect the ZEMMA enroute transition.

NOTE: Chart not to scale.

(CONTINUED ON FOLLOWING PAGE)

# NANDR FOUR DEPARTURE (RNAV)

FORT WORTH, TEXAS

SC-2, 11 JUN 2026 to 09 JUL 2026

SC-2, 11 JUN 2026 to 09 JUL 2026