

FORT WORTH, TEXAS

RNAV (GPS) RWY 18

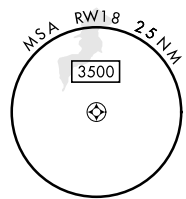
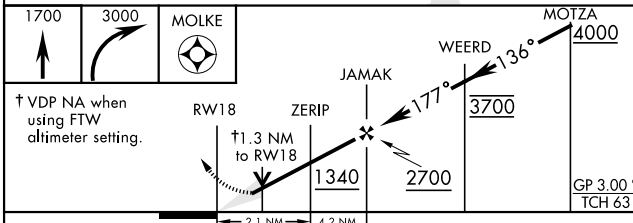
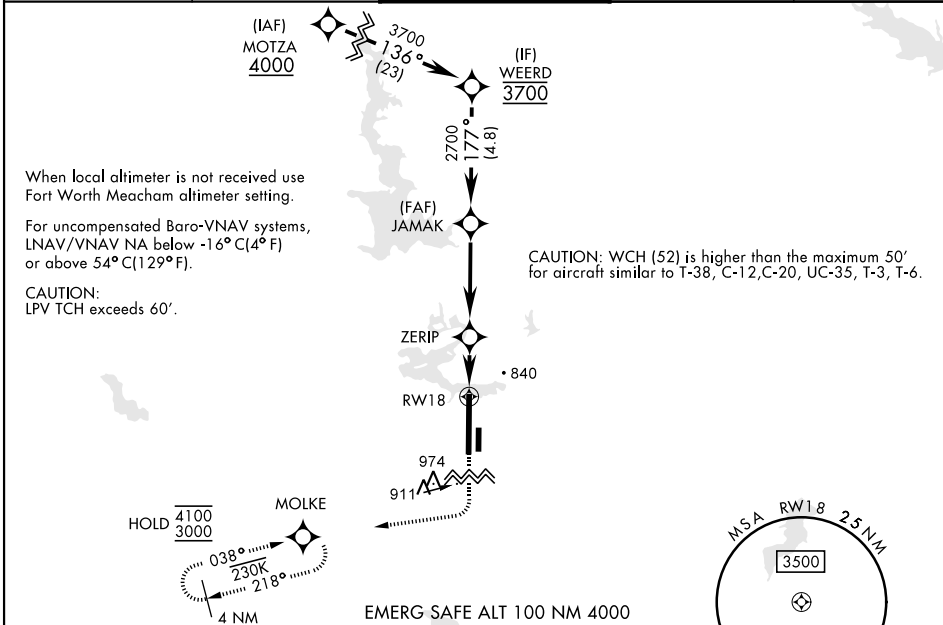
WAAS CH 71215 W18A	APCH CRS 177°	Rwy Ldg 11,999 TDZE 636 Arprt Elev 650
--	-------------------------	---

[UN] FORT WORTH NAS JRB (CARSWELL FLD) (KNFW)

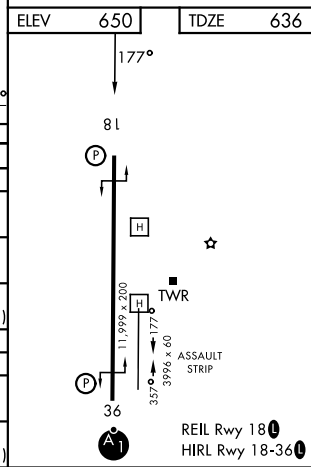
RNP APCH-GPS
 * Circling not authorized E of Rwy 18-36.
 ** Baro VNAV NA when local altimeter not received.

MISSED APPROACH: Climb to 1700, then climbing right turn to 3000 direct MOLKE and hold.

ATIS * 351.675	LONE STAR APP CON 125.8 257.95	NAVY FORT WORTH TOWER * 120.950 269.325	GND CON 121.675 279.575	ASR/PAR
--------------------------	--	---	-----------------------------------	---------



CATEGORY	A	B	C	D	E
LPV DA	836-¾		200	(200-¾)	
LNAV/VNAV DA**	1100-1⅓		464	(500-1⅓)	
LNAV MDA	1100-1	464 (500-1)	1100-1⅓ 464 (500-1⅓)		
CIRCLING *	1220-1 570 (600-1)	1320-1 670 (700-1)	1320-1¾ 670 (700-1¾)	1400-2½ 750 (800-2½)	1420-2¾ 770 (800-2¾)
FORT WORTH MEACHAM ALTIMETER					
LPV DA	856-¾		220	(300-¾)	
LNAV MDA	1120-1	484 (500-1)	1120-1⅓ 484 (500-1⅓)		
CIRCLING *	1240-1 590 (600-1)	1340-1 690 (700-1)	1340-2 690 (700-2)	1420-2½ 770 (800-2½)	1440-2¾ 790 (800-2¾)



FORT WORTH, TEXAS 32°46'N-97°26'W FORT WORTH NAS JRB (CARSWELL FLD) (KNFW)

Amdt 3 14MAY26

RNAV (GPS) RWY 18

SC-2, 11 JUN 2026 to 09 JUL 2026

SC-2, 11 JUN 2026 to 09 JUL 2026