

TACAN Z RWY 18

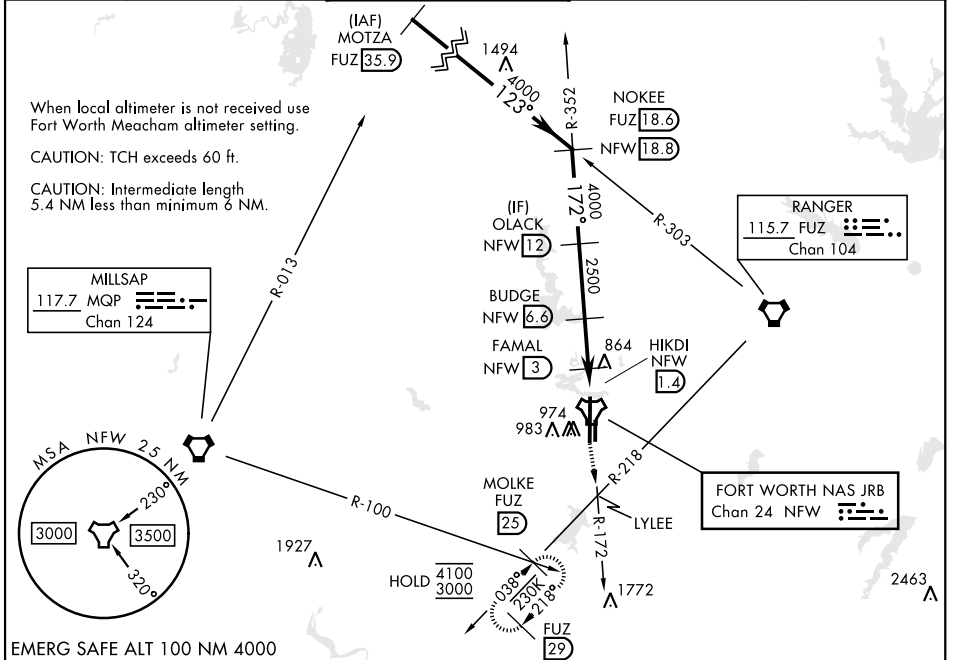
TACAN NFW Chan 24	APCH CRS 172°	Rwy Idg 11,999 TDZE Arpt Elev 636 650
-----------------------------	-------------------------	---

[USN] FORT WORTH NAS JRB (CARSWELL FLD) (KNFW)

FUZ VORTAC or RADAR required.
 * Circling not authorized E of Rwy 18-36.

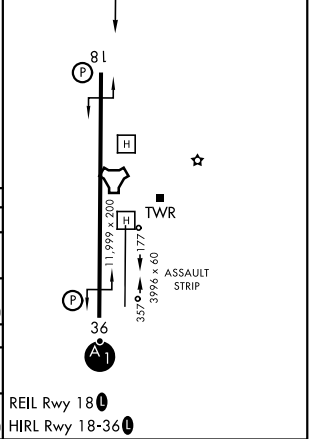
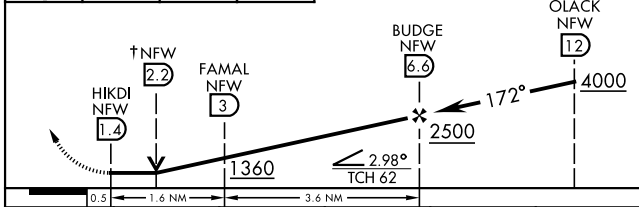
MISSED APPROACH: Climb to 3000 direct LYLEE to intercept FUZ VORTAC R-218 to MOLKE and hold.

ATIS* 351.675	LONE STAR APP CON 125.8 257.95	NAVY FORT WORTH TOWER* 120.950 269.325	GND CON 121.675 279.575	ASR/PAR
-------------------------	--	--	-----------------------------------	---------



3000	LYLEE	FUZ R-218	MOLKE FUZ 25	↑VDP NA when using FTW altimeter setting
------	-------	-----------	--------------	--

ELEV 650	TDZE 636
----------	----------



CATEGORY	A	B	C	D	E
S-18	1120-1 484 (500-1)		1120-1 $\frac{3}{8}$ 484 (500-1 $\frac{3}{8}$)		
CIRCLING*	1220-1 570 (600-1)	1320-1 670 (700-1)	1320-1 $\frac{3}{4}$ 670 (700-1 $\frac{3}{4}$)	1400-2 $\frac{1}{2}$ 750 (800-2 $\frac{1}{2}$)	1420-2 $\frac{3}{4}$ 770 (800-2 $\frac{3}{4}$)
FORT WORTH MEACHAM ALTIMETER					
S-18	1140-1 504 (500-1)		1140-1 $\frac{3}{8}$ 504 (500-1 $\frac{3}{8}$)		
CIRCLING*	1240-1 590 (600-1)	1340-1 690 (700-1)	1340-2 690 (700-2)	1420-2 $\frac{1}{2}$ 770 (800-2 $\frac{1}{2}$)	1440-2 $\frac{3}{4}$ 790 (800-2 $\frac{3}{4}$)

FORT WORTH, TEXAS 32°46'N-97°26'W FORT WORTH NAS JRB (CARSWELL FLD) (KNFW)

Amtd 1 14MAY26

TACAN Z RWY 18

SC-2, 11 JUN 2026 to 09 JUL 2026

SC-2, 11 JUN 2026 to 09 JUL 2026