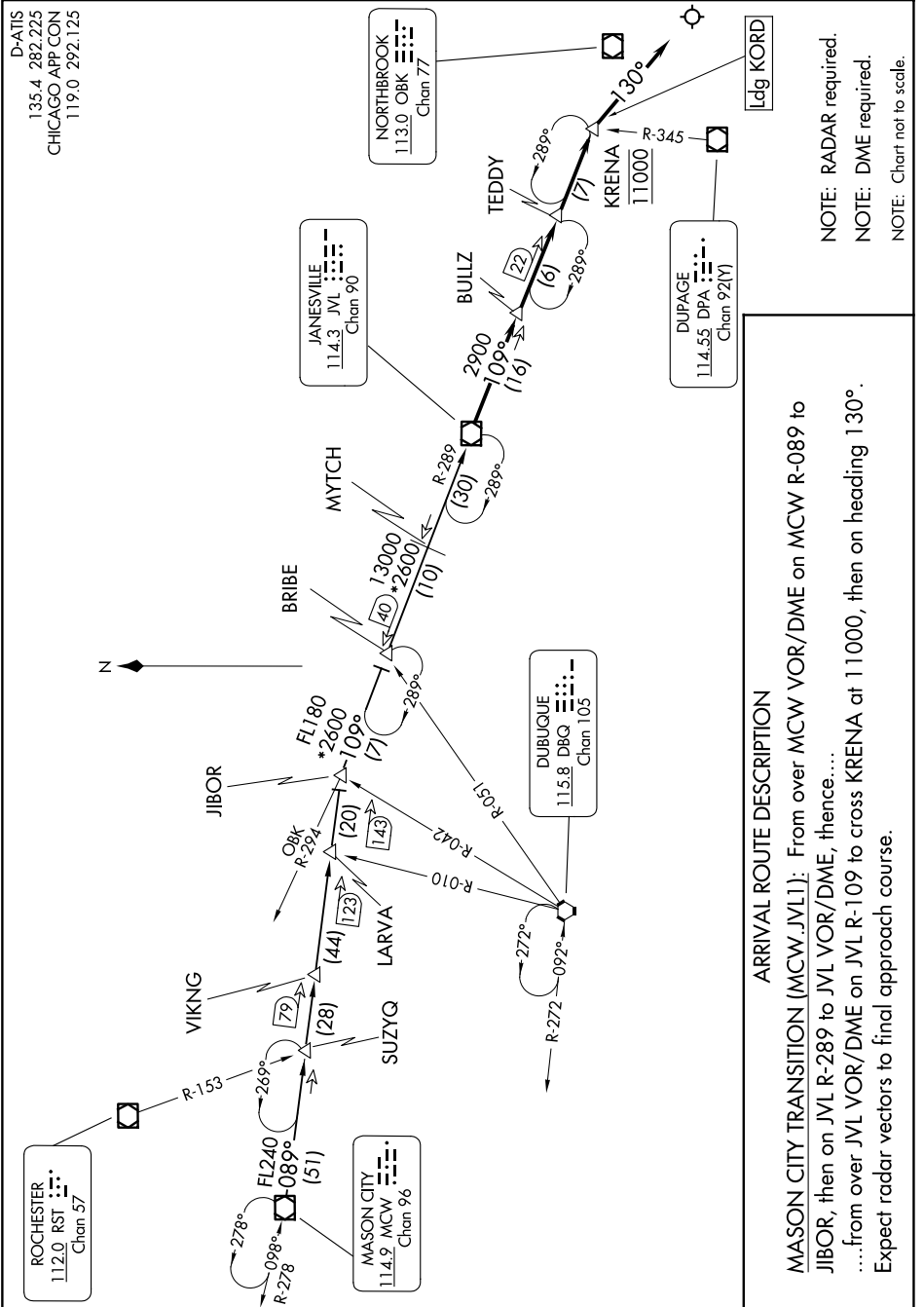


EC-3, 11 JUN 2026 to 09 JUL 2026



EC-3, 11 JUN 2026 to 09 JUL 2026

NOTE: RADAR required.
 NOTE: DME required.
 NOTE: Chart not to scale.

ARRIVAL ROUTE DESCRIPTION

MASON CITY TRANSITION (MCW.JVL1): From over MCW VOR/DME on MCW R-089 to JIBOR, then on JVL R-289 to JVL VOR/DME, thence...
 ...from over JVL VOR/DME on JVL R-109 to cross KRENA at 11000, then on heading 130°. Expect radar vectors to final approach course.