

# HI-TACAN Z RWY 26

TACAN Chan <b>112</b>	GSB <b>261°</b>	APCH CRS <b>261°</b>	Rwy ldg <b>11,760</b> TDZE <b>109</b> Arprt Elev <b>109</b>
--------------------------	--------------------	-------------------------	---

[USAF]

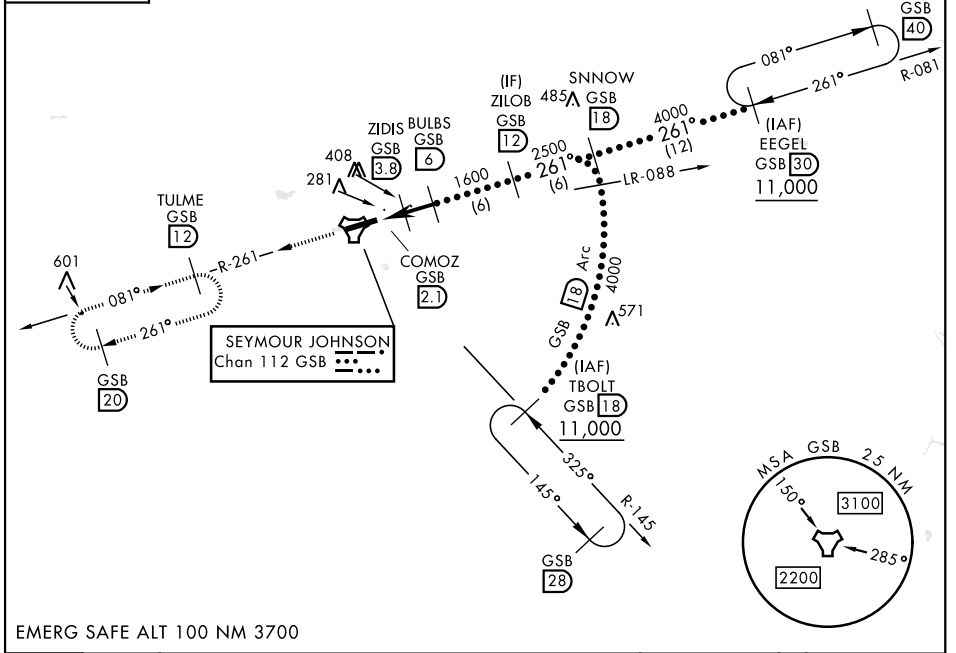
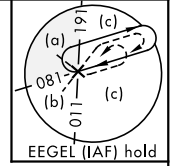
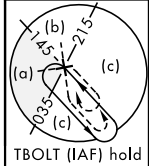
SEYMOUR JOHNSON AFB (KGSB)

▼ \* When ALS inop, increase vis to 1¼ miles.  
 \*\* Circling N of Rwy 8-26 not authorized.



MISSED APPROACH: Climb to 2200 via GSB R-261 to TULME and hold.

ATIS ★ <b>317.625</b>	APP CON <b>123.7 290.9</b> (258°-110°) <b>119.7 273.6</b> (111°-257°)	TOWER ★ <b>126.25 370.875</b>	GND CON <b>132.45 275.8</b>
--------------------------	---	----------------------------------	--------------------------------

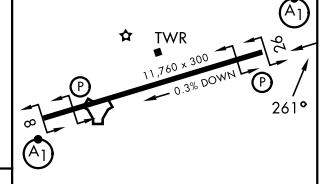
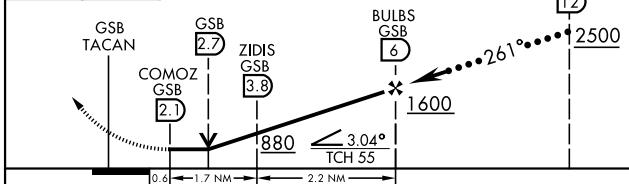


SE-2, 11 JUN 2026 to 09 JUL 2026

SE-2, 11 JUN 2026 to 09 JUL 2026

EMERG SAFE ALT 100 NM 3700

2200 GSB R-261	TULME R-261 <b>12</b>	ELEV 109	TDZE 109
----------------------	-----------------------------	----------	----------



CATEGORY	C	D	E
S-26*	540/40	431 (500-¾)	
CIRCLING**	680-1½ 571 (600-1½)	740-2 631 (700-2)	740-2¼ 631 (700-2¼)

HIRL Rwy 8-26

# HI-TACAN Z RWY 26