

GOLDSBORO, NORTH CAROLINA

# ILS or LOC Y RWY 26

LOC I-DDX <b>109.9</b>	APCH CRS <b>261°</b>	Rwy ldg <b>11,760</b> TDZE <b>109</b> Arprt Elev <b>109</b>
---------------------------	-------------------------	---

[USAF]

SEYMOUR JOHNSON AFB (KGSB)

RADAR or DME required



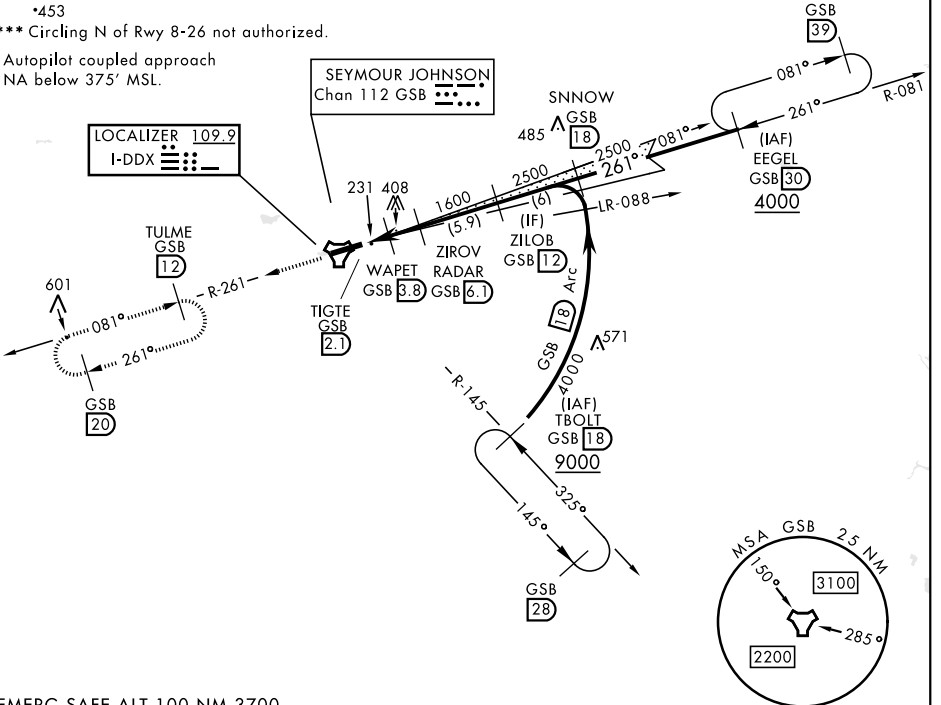
MISSED APPROACH: Climb to 2200 via GSB TACAN R-261 to TULME and hold.

▼ \* When ALS inop, increase RVR to 40 and vis to ¾ mile.  
\*\* When ALS inop, increase CAT AB RVR to 55 and vis to 1 mile, CAT DE RVR to 60 and vis to 1½ miles.

ATIS ★ <b>317.625</b>	APP CON <b>123.7 290.9</b> (258°-110°) <b>119.7 273.6</b> (111°-257°)	TOWER ★ <b>126.25 370.875</b>	GND CON <b>132.45 275.8</b>
--------------------------	---	----------------------------------	--------------------------------

\*453  
\*\*\* Circling N of Rwy 8-26 not authorized.

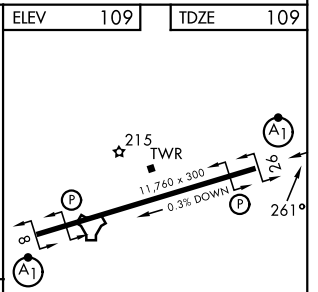
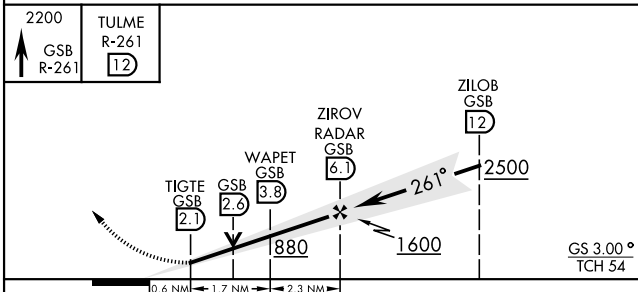
Autopilot coupled approach  
NA below 375' MSL.



SE-2, 11 JUN 2026 to 09 JUL 2026

SE-2, 11 JUN 2026 to 09 JUL 2026

EMERG SAFE ALT 100 NM 3700



CATEGORY	A	B	C	D	E
S-ILS 26*	309/24 200 (200-½)				
S-LOC 26**	500/24	391 (400-½)	500/35	391 (400-¾)	
CIRCLING***	580-1 471 (500-1)	600-1 491 (500-1)	680-1½ 571 (600-½)	740-2 631 (700-2)	740-2¼ 631 (700-2¼)

HIRL Rwy 8-26

FAF to MAP 4 NM					
Knots	60	90	120	150	180
Min:Sec	4:00	2:40	2:00	1:36	1:20

GOLDSBORO, NORTH CAROLINA

35°20'N-77°58'W

SEYMOUR JOHNSON AFB (KGSB)

Amdt 9 03NOV22

# ILS or LOC Y RWY 26