

GOLDSBORO, NORTH CAROLINA

ILS or LOC Y RWY 8

LOC I-GSB	APCH CRS	Rwy Idg
109.3	081°	11,760
	081°	73
		TDZE
		109
		Arprt Elev

[USAF]

SEYMOUR JOHNSON AFB (KGSB)

RADAR or DME required.

▲ * When ALS inop, increase RVR to 40 and vis to 3/4 mile.
 ** When ALS inop, increase CAT AB RVR to 55 and vis to 1 mile, CAT CDE vis to 1 3/8 miles.
 *** Circling N of Rwy 8-26 not authorized.

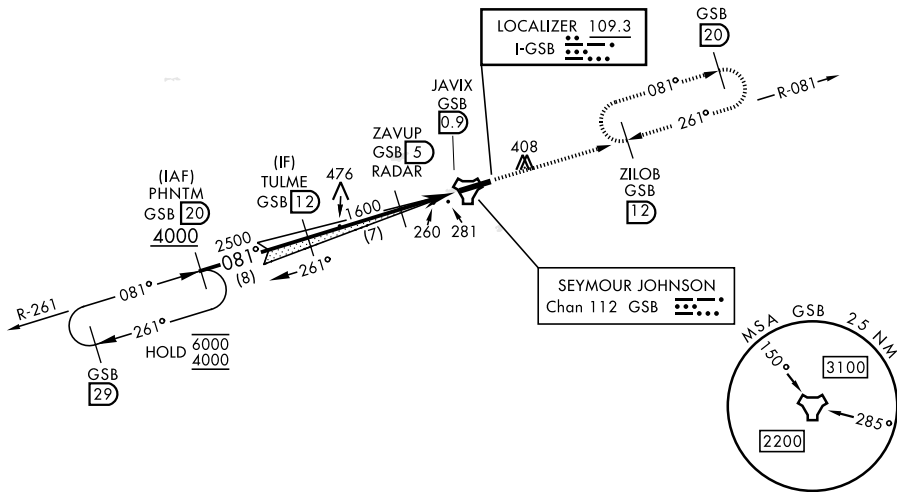
ALSF-1

MISSED APPROACH: Climb to 2300 via GSB R-081 to ZILOB and hold.

ATIS ★	APP CON	TOWER ★	GND CON
317.625	123.7 290.9 (258°-110°) 119.7 273.6 (111°-257°)	126.25 370.875	132.45 275.8

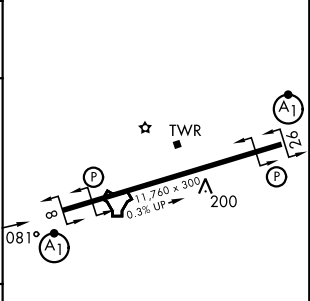
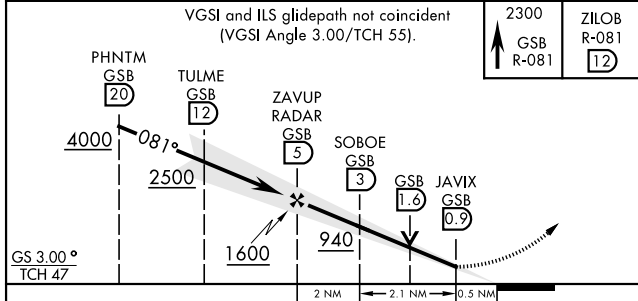
CAUTION: Autopilot coupled operations not authorized below 266' MSL.

453



ELEV	109	TDZE	73
------	-----	------	----

EMERG SAFE ALT 100 NM 3700



CATEGORY	A	B	C	D	E
S-ILS 8*	273/24		200	(200-1/2)	
S-LOC 8**	520/24	447 (500-1/2)	520/45	447	(500-7/8)
CIRCLING***	580-1 471 (500-1)	600-1 491 (500-1)	680-1 1/2 571 (600-1 1/2)	740-2 631 (700-2)	740-2 1/4 631 (700-2 1/4)

HIRL Rwy 8-26

FAF to MAP 4.1 NM					
Knots	60	90	120	150	180
Min:Sec	4:06	2:44	2:03	1:38	1:22

GOLDSBORO, NORTH CAROLINA

35° 20' N-77° 58' W

SEYMOUR JOHNSON AFB (KGSB)

Amdt 8 17APR25

ILS or LOC Y RWY 8

SE-2, 11 JUN 2026 to 09 JUL 2026

SE-2, 11 JUN 2026 to 09 JUL 2026