

GOLDSBORO, NORTH CAROLINA

# RNAV (GPS) RWY 26

WAAS CH <b>95096</b> <b>W26A</b>	APCH CRS <b>261°</b>	Rwy ldg TDZE Arprt Elev	<b>11,760</b> <b>109</b> <b>109</b>
--	-------------------------	-------------------------------	---

(USAF)

SEYMOUR JOHNSON AFB (KGSB)

RNP APCH-GPS

ALSIF-1

MISSED APPROACH: Climb to 2200 direct RITIE and hold.

- ▼ \* When ALS inop, increase RVR to 40, vis to 3/4 mile.
- \*\* When ALS, inop increase RVR to 60, vis to 1 1/8 miles.
- \*\*\* When ALS inop, increase CAT AB RVR to 55, vis to 1 mile; CAT CDE vis to 1 1/4 miles.

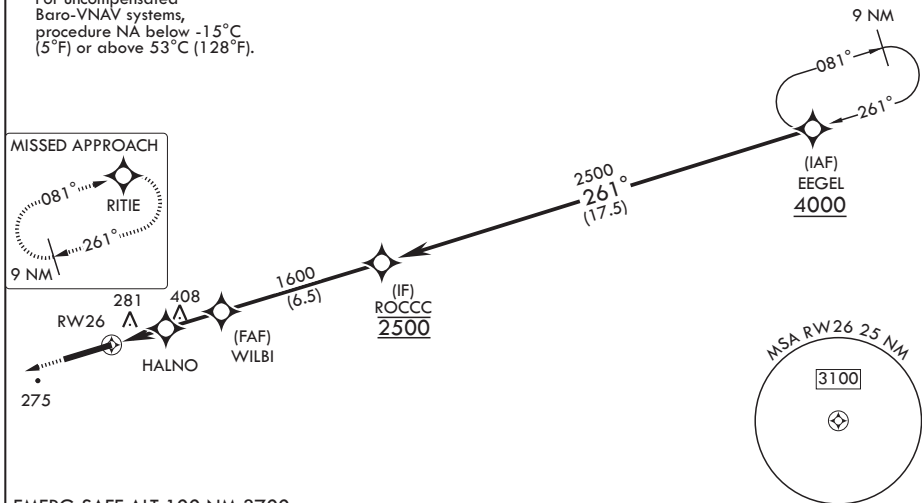


ATIS* <b>317.625</b>	APP CON <b>119.7 273.6 (111° -257°)</b> <b>123.7 290.9 (258° -110°)</b>	TOWER* <b>126.25 370.875</b>	GND CON <b>132.45 275.8</b>
-------------------------	---	---------------------------------	--------------------------------

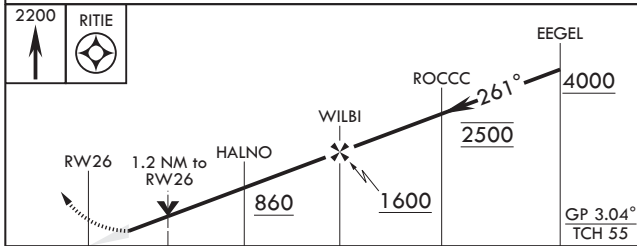
\*\*\*\* Circling NA N of Rwy 8-26.

For uncompensated Baro-VNAV systems, procedure NA below -15°C (5°F) or above 53°C (128°F).

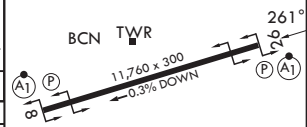
MISSED APPROACH



EMERG SAFE ALT 100 NM 3700



ELEV 109	TDZE 109
----------	----------



CATEGORY	A	B	C	D	E
LPV DA*	309/24		200	(200-1/2)	
LNAV/VNAV DA**	510/40		401	(500-3/4)	
LNAV MDA***	540/24	431 (500-1/2)	540/40	431	(500-3/4)
CIRCLING****	580-1 471 (500-1)	600-1 491 (500-1)	680-1 1/2 571 (600-1 1/2)	740-2 631 (700-2)	740-2 1/4 631 (700-2 1/4)

HIRL all rwys

GOLDSBORO, NORTH CAROLINA

35°20'N - 77°58'W

SEYMOUR JOHNSON AFB (KGSB)

Amdt 6 11JUL24

# RNAV (GPS) RWY 26

SE-2, 11 JUN 2026 to 09 JUL 2026

SE-2, 11 JUN 2026 to 09 JUL 2026