

GOLDSBORO, NORTH CAROLINA

RNAV (GPS) RWY 8

WAAS CH 63600 W08A	APCH CRS 081°	Rwy ldg TDZE Arpt Elev	11,760 73 109
---------------------------------	-------------------------	------------------------------	--


(USAF)

SEYMOUR JOHNSON AFB (KGSB)

RNP APCH-GPS

▼ * When ALS inop, increase RVR to 40, vis to ¾ mile.
 ** When ALS inop, increase vis to 1 3/8 miles.
 *** When ALS inop, increase CAT AB RVR to 55, vis to 1 mile; CAT CDE vis to 1 3/8 miles.

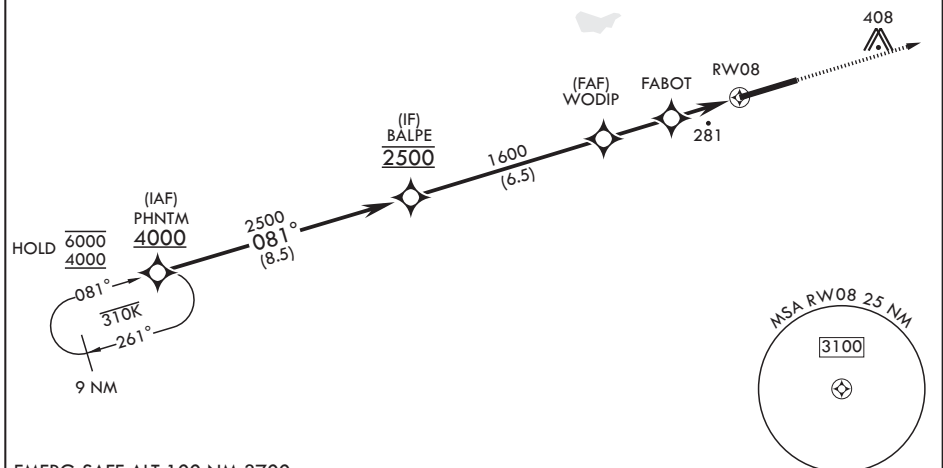
ALSF-1 MISSED APPROACH: Climb to 2300 direct ZILOB and hold.



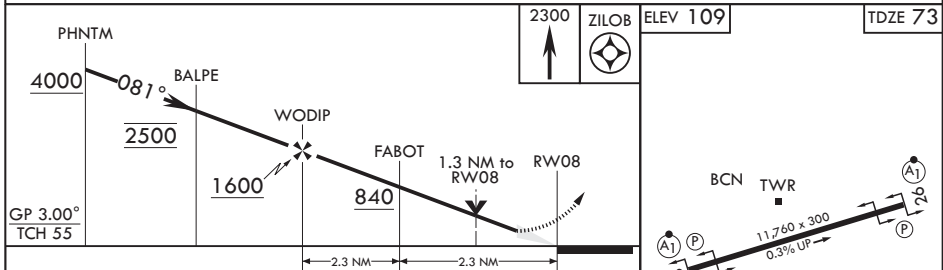
ATIS* 317.625	APP CON 119.7 273.6 (111° -257°) 123.7 290.9 (258° -110°)	TOWER* 126.25 370.875	GND CON 132.45 275.8
-------------------------	---	---------------------------------	--------------------------------

**** Circling NA N of RWY 8-26.

For uncompensated Baro-VNAV systems, procedure NA below -15°C (5°F) or above 54°C (130°F).



EMERG SAFE ALT 100 NM 3700



CATEGORY	A	B	C	D	E
LPV DA*	273/24		200	(200-½)	
LNAV/VNAV DA**	540/50		467	(500-1)	
LNAV MDA***	540/24	467 (500-½)	540/50	467	(500-1)
CIRCLING****	580-1 471 (500-1)	600-1 491 (500-1)	680-1½ 571 (600-1½)	740-2 631 (700-2)	740-2¼ 631 (700-2¼)

HIRL all rwys

GOLDSBORO, NORTH CAROLINA

35°20'N - 77°58'W

SEYMOUR JOHNSON AFB (KGSB)

Amdt 7 11JUL24

RNAV (GPS) RWY 8

SE-2, 11 JUN 2026 to 09 JUL 2026

SE-2, 11 JUN 2026 to 09 JUL 2026