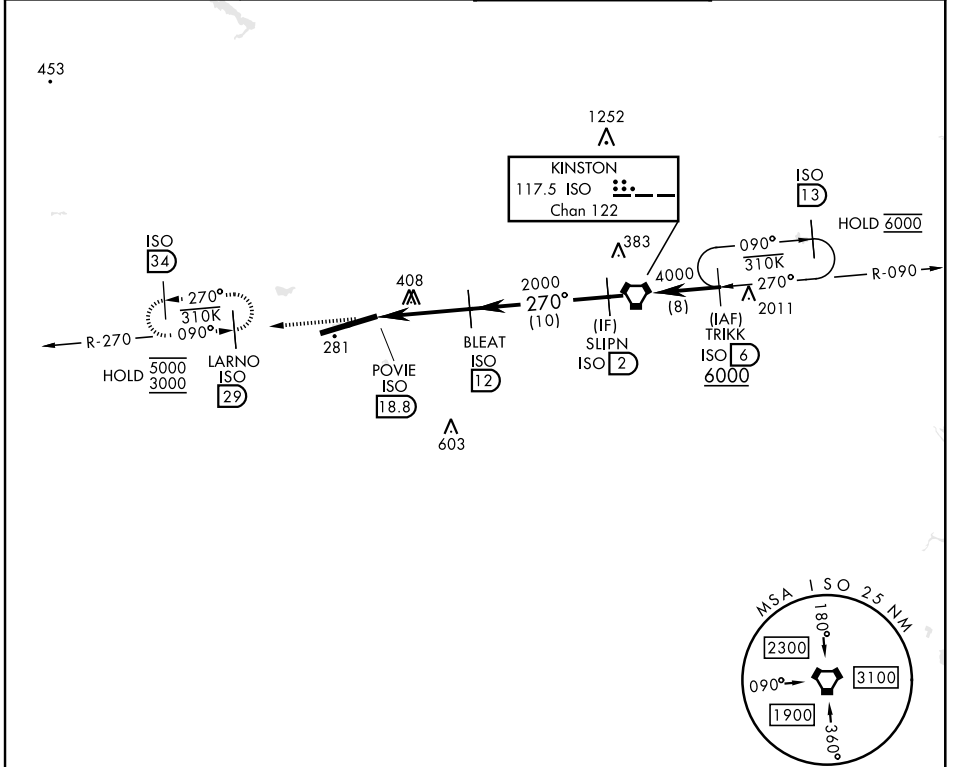


# TACAN-A

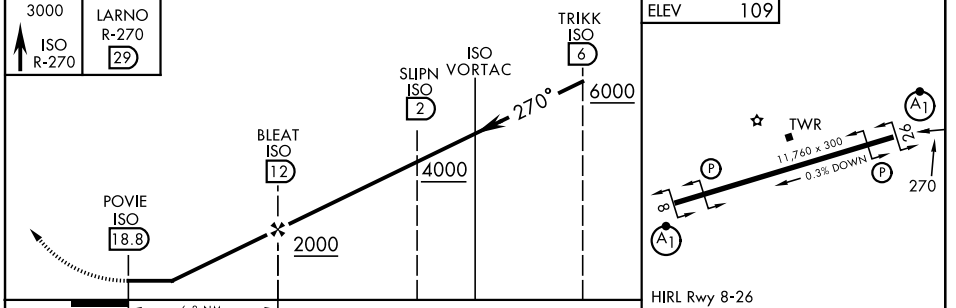
KINSTON ISO <b>117.5</b> Chan <b>122</b>	APCH CRS <b>270°</b>	Rwy Idg TDZE Arprt Elev <b>N/A</b> <b>N/A</b> <b>109</b>	[USAF]	SEYMOUR JOHNSON AFB (KGSB)
--	-------------------------	---	--------	----------------------------

▼ Circling not authorized from Rwy 8 clockwise to Rwy 26.
 MISSED APPROACH: Climb to 3000 via ISO VORTAC R-270 to LARNO and hold; continue climb-in-hold to 3000.

ATIS ★ <b>317.625</b>	APP CON <b>123.7 290.9</b> (258°-110°) <b>119.7 273.6</b> (111°-257°)	TOWER ★ <b>126.25 370.875</b>	GND CON <b>132.45 275.8</b>
--------------------------	---	----------------------------------	--------------------------------



EMERG SAFE ALT 100 NM 4100



CATEGORY	FAF to MAP 6.8 NM					
	A	B	C	D	E	
CIRCLING	740-1	631 (700-1)	740-1¾ 631 (700-1¾)	740-2 631 (700-2)	740-2¼ 631 (700-2¼)	
	Knots	60	90	120	150	180
	Min:Sec	6:48	4:32	3:24	2:43	2:16

# TACAN-A

SE-2, 11 JUN 2026 to 09 JUL 2026

SE-2, 11 JUN 2026 to 09 JUL 2026